

Notice Inviting Limited Tenders for Electrical Works of MSME Sulabh Hazaribagh and RAH Hazaribagh

1. Date of Floating Tender – 11.03.2024
2. Last date to submit Tender – 16.03.2024 12:00 PM
3. Date of opening of Tender – 16.03.2024 01:00 PM
4. EMD Amount – -Nil-
5. Security Deposit – 2% of the allotted tender amount

Issued By:

General Administration Section  
Canara Bank Circle Office Ranchi  
4<sup>th</sup> Floor, Kaushalya Chambers,  
P P Compound, M G Road,  
Ranchi – 834001

Terms and conditions

1. The work will be awarded to L1 bidder.
2. The work should be complete compulsorily by 15.04.2024. In case of delay a penalty of Rs. 5,000/- per day will be levied on the vendor.
3. The vendor should make their own arrangements for stay of the labours and no claim will be entertained in this regard by the Bank.
4. The vendor should have valid labour license for undertaking furnishing works with more than 20 labours at one location.
5. Retention Money Deposit amount of 10% of the base amount of the tender will be deducted at the time of final payment which will be released within fourteen days after completion of defect liability period of 1 year from the date of payment. However, the amount can be released upon submitting the Performance Guarantee of the amount equal to the base amount for the entire contract for that particular firm.
6. Liquidation Damage charges of Rs. 3000/- per week will be levied to the vendor if there is delay in completing the works after taking in to account all the practical difficulties in case any.
7. The amount quoted should be exclusive of GST amount which shall be paid separately by Bank.
8. The applicant has to put seal and sign on all the pages of the tender document.

**BOQ FOR ELECTRICAL WORKS FOR CANARA BANK MSME SULABH HAZARIBAGH AND RAH HAZARIBAGH**

Item No	Item Description	Unit	Qty	Rate	Amount
1	<b>MAIN PANEL</b>				
	<p>Supply and installation (IP 42/43) galvanized and painted sheet steel of gauge 1mm, dust and vermin proof enclosure of 4 way TPN Panel with cover conforming to IS 8623 - 1&amp;3, IEC 61439 - 1&amp;3 with below components:-</p> <p>a) RYB LED light indicator                      b) RYB Voltmeter with provision of measurement of Voltage between any 2 phases                      c) Line Current Ammeter with provision of measurement of current in each phase                      d) Built in Bus bar with provision to tap atleast 4 connections                      e) 63A changeover switch for provision of Generator connection</p> <p><b>Incomer:</b>                      Supplying and fitting 100A 4P 415V 50Hz MCCB</p> <p><b>Outgoings:</b>                      1 no. 40A 4P 415V 50Hz MCB for Lighting DB                      1 no. 40A 4P 415V 50Hz MCB for AC DB                      1 no. 63A 4P 415V 50Hz MCB for UPS Input DB</p>	Set	2		

Item No	Item Description	Unit	Qty	Rate	Amount
2	<b>LIGHTING DB</b>				
	Supplying and installing IP42 standard single door lighting distribution box having following components:- <b>Incomer:</b> 4 pole MCB - 40A <b>Outgoing:</b> 1 pole MCB - 6A -10 nos.	Set	2		
3	<b>UPS INPUT DB</b>				
	Supplying and installing IP42 standard single door UPS input distribution box having following components:- <b>Incomer:</b> 4 pole MCB - 40A <b>Outgoing:</b> 4 pole MCB - 40A -2 nos.	Set	2		
4	<b>AC DB</b>				
	Supplying and installing IP42 standard single door AC distribution box having following components:- <b>Incomer:</b> 4 pole MCB - 40A <b>Outgoing:</b> 3 pole MCB - 16A -6 nos.	Set	2		
5	<b>UPS OUPUT DB</b>				
	Supplying and installing IP42 standard single door UPS output distribution box having following components:- <b>Incomer:</b> 2 pole MCB - 32A <b>Outgoing:</b> 1 pole MCB - 6A -10 nos.	Set	2		
6	<b>WIRING</b>				
	<b>COLOUR CODING AS PER IS 732 STANDARD. R Phase - RED COLOUR, Y Phase - YELLOW COLOUR, B Phase - BLUE COLOUR</b>				
a	Supplying and laying 2 X 2.5 sq mm + 1 X 1.5 sq mm Fire Resistant Low Smoke multistrand copper wire of approved make in 25mm electric grade PVC pipe (UPS DB to computer wiring -one wiring i.e. one mcb for maximum 3 computer points , LIGHT DB to each switch board ,UPS DB to Glow sign board )	mtr	500		
b	Supplying and laying 2 X 4.0 sq mm + 1 X 1.5 sq mm Fire Resistant Low Smoke multistrand copper wire of approved make in 25mm electric grade PVC pipe (AC DB to to each AC point )	mtr	450		
c	Supplying and laying 2 X 6.0 sq mm + 1 X 2.5 sq mm Fire Resistant Low Smoke multistrand copper wire of approved make in 25mm electric grade PVC pipe ( UPS INPUT DB TO UPS OUTPUT DB)	mtr	100		
d	Supplying and laying 4 X 4.0 sq mm + 1 X 2.5 sq mm Fire Resistant Low Smoke multistrand copper wire of approved make in 25mm electric grade PVC pipe for interconnections between panel and distribution boxes (MAIN PANEL TO UPS INPUT DB , LIGHT DB , AC DB)	mtr	60		
e	Supply and laying Fire Resistant Low Smoke 4 core 35.0 sq mm copper multistrand armoured cable for connection from electricity meter to the main panel	mtr	20		
7	<b>EARTHING</b>				
a	Providing separate chemical earthing for UPS system by digging 6 feet deep hole and connecting with 6 SWG GI wire to UPS system	Set	2		
b	Providing separate GI pipe earthing system after digging 6 feet deep trench and filling the base with charcoal and salt along with 1.5 inch GI pipe and connecting with 6 SWG GI wire to main panel	Set	2		
8	<b>UPS INPUT AND OUTPUT SOCKET AND SWITCH</b>				
	Supplying and installing industrial grade metal clad 63A socket along with 63A DP MCB with all interconnections	Nos.	6		
9	<b>POINT WIRING FOR LIGHT, CALL BELL</b>				

Item No	Item Description	Unit	Qty	Rate	Amount
a	Executing point wiring for light fixtures and call bell circuits using 2 runs of 1.5 sq mm fire resistant low smoke multistrand flexible copper wire of approved make in 19mm electric grade PVC pipe with all interconnections. The wiring should include 1 no. modular switch for control of 1 no. light fitting/ call bell. The wiring should be terminated in a round ceiling rose junction box. The switch plate metal box and the pipe should be concealed in the wall and the surface to be made good with necessary plastering work.	Nos.	0		
b	Executing point wiring for light fixtures and call bell circuits using 2 runs of 1.5 sq mm fire resistant low smoke multistrand flexible copper wire of approved make in 19mm electric grade PVC pipe with all interconnections. The wiring should include 1 no. modular switch for control of 1 no. light fitting/ call bell. The wiring should be terminated in a round ceiling rose junction box. The switch plate modular box and the pipe should be concealed in the partition. (loop wiring)	Nos.	60		
c	Executing point wiring for light fixtures and call bell circuits using 2 runs of 1.5 sq mm fire resistant low smoke multistrand flexible copper wire of approved make in 19mm electric grade PVC pipe with all interconnections. The wiring should include 1 no. modular switch for control of 1 no. light fitting/ call bell. The wiring should be terminated in a round ceiling rose junction box. The switch plate modular box and the pipe should be kept exposed in the wall.	Nos.	0		

Item No	Item Description	Unit	Qty	Rate	Amount
10	<b>POINT WIRING FOR CEILING FAN</b>				
a	Executing point wiring for light fixtures and call bell circuits using 2 runs of 1.5 sq mm fire resistant low smoke multistrand flexible copper wire of approved make in 19mm electric grade PVC pipe with all interconnections. The wiring should include 1 no. modular switch along with 1 no. electronic regulator for control of 1 no. ceiling fan. The wiring should be terminated in a round ceiling rose junction box. The switch plate metal box and the pipe should be concealed in the wall and the surface to be made good with necessary plastering work.	Nos.	8		
b	Executing point wiring for light fixtures and call bell circuits using 2 runs of 1.5 sq mm fire resistant low smoke multistrand flexible copper wire of approved make in 19mm electric grade PVC pipe with all interconnections. The wiring should include 1 no. modular switch along with 1 no. electronic regulator for control of 1 no. ceiling fan. The wiring should be terminated in a round ceiling rose junction box. The switch plate modular box and the pipe should be concealed in the partition.	Nos.	0		
c	Executing point wiring for light fixtures and call bell circuits using 2 runs of 1.5 sq mm fire resistant low smoke multistrand flexible copper wire of approved make in 19mm electric grade PVC pipe with all interconnections. The wiring should include 1 no. modular switch along with 1 no. electronic regulator for control of 1 no. ceiling fan. The wiring should be terminated in a round ceiling rose junction box. The switch plate modular box and the pipe should be kept exposed in the wall.	Nos.	0		

Item No	Item Description	Unit	Qty	Rate	Amount
11	<b>POINT WIRING FOR WALL MOUNTED FAN</b>				
a	Executing point wiring for light fixtures and call bell circuits using 2 runs of 1.5 sq mm fire resistant low smoke multistrand flexible copper wire of approved make in 19mm electric grade PVC pipe with all interconnections. The wiring should include 1 no. modular switch along with 1 no. electronic regulator for control of 1 no. wall mounted fan. The wiring should be terminated in a concealed metal box with 3 module modular plate having 1 no. 6A socket and 1 no. 6A switch. The switch plate metal box and the pipe should be concealed in the wall and the surface to be made good with necessary plastering work.	Nos.	0		
b	Executing point wiring for light fixtures and call bell circuits using 2 runs of 1.5 sq mm fire resistant low smoke multistrand flexible copper wire of approved make in 19mm electric grade PVC pipe with all interconnections. The wiring should include 1 no. modular switch along with 1 no. electronic regulator for control of 1 no. wall mounted fan. The wiring should be terminated in a concealed modular box with 3 module modular plate having 1 no. 6A socket and 1 no. 6A switch. The switch plate modular box and the pipe should be concealed in the partition.	Nos.	20		
c	Executing point wiring for light fixtures and call bell circuits using 2 runs of 1.5 sq mm fire resistant low smoke multistrand flexible copper wire of approved make in 19mm electric grade PVC pipe with all interconnections. The wiring should include 1 no. modular switch along with 1 no. electronic regulator for control of 1 no. wall mounted fan. The wiring should be terminated in a exposed modular box with 3 module modular plate having 1 no. 6A socket and 1 no. 6A switch. The switch plate modular box and the pipe should be kept exposed in the wall.	Nos.	0		

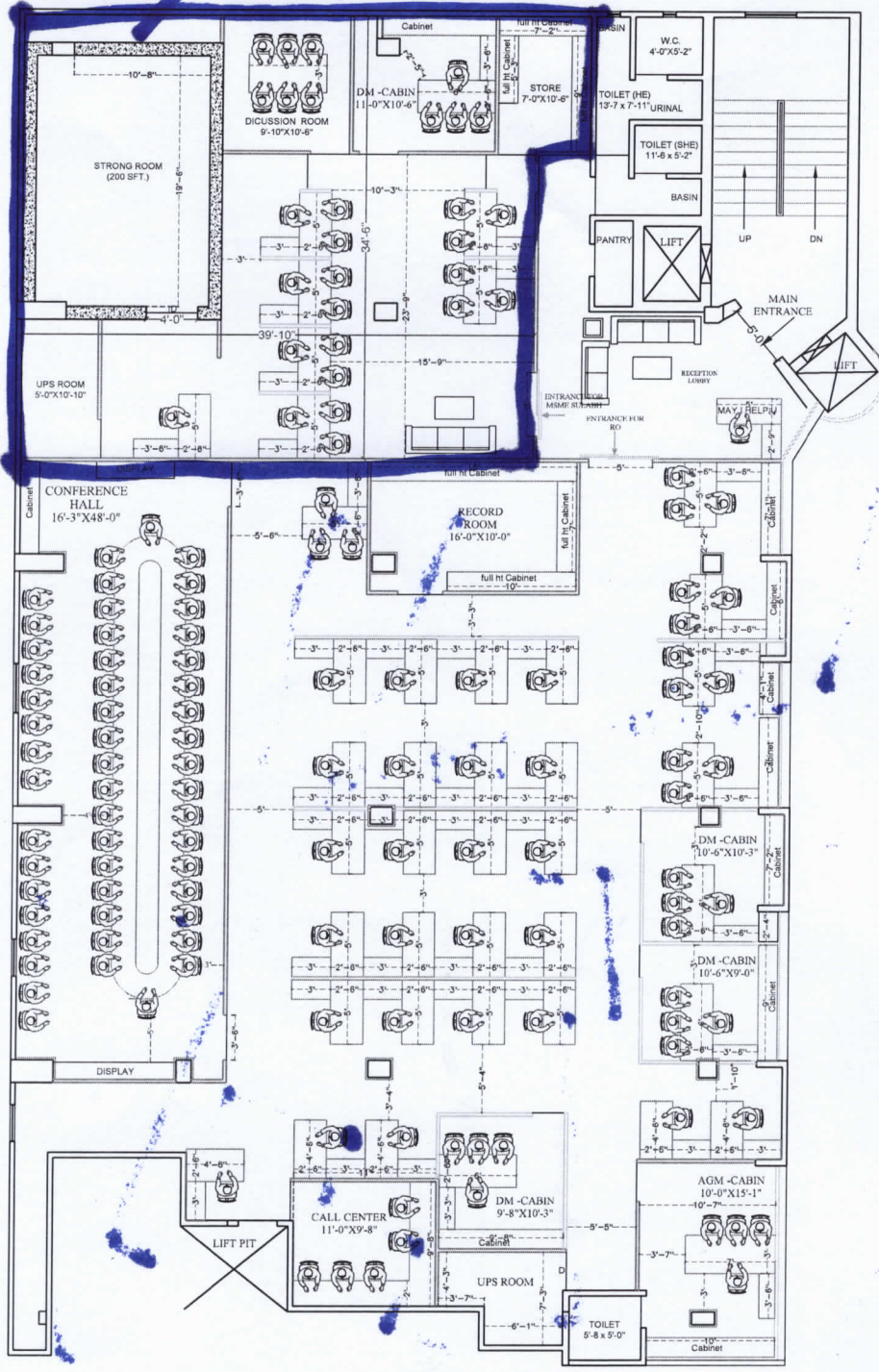
Item No	Item Description	Unit	Qty	Rate	Amount
12	<b>COMPUTER POINTS</b>				
	Supplying and fixing 8 module modular box of approved make having 3 nos. 6A socket controlled by 1 no. 16A switch and 1 no. indicator switch with all interconnections completed for UPS computer power source	Nos.	24		
13	<b>DEPENDENT PLUG POINTS</b>				
	Supplying and fixing dependent 6A socket and 6A switch in switch plate along with all interconnections. The switch box to be concealed or to be exposed as per direction	Nos.	10		
14	<b>INDEPENDENT PLUG POINTS</b>				
a	Supplying and fixing dependent 6/16A socket and 16A switch in 3 module concealed metal box with all interconnections. The switch box to be concealed in the wall	Nos.	0		
b	Supplying and fixing dependent 6/16A socket and 16A switch in 3 module concealed modular box with all interconnections. The switch box to be concealed in the wooden partition	Nos.	15		
c	Supplying and fixing dependent 6/16A socket and 16A switch in 3 module concealed modular box with all interconnections. The switch box to be fixed directly on the wall	Nos.	0		
15	<b>LIGHT FITTINGS</b>				
a	Supplying and fixing 36W 2'X2' recess mounted LED light fittings of approved make. The lights should be compatible with grid type false-ceiling	Nos.	36		
b	Supplying and fixing 22W LED Tubelight of approved make	Nos.	0		
c	Supplying and fixing 36W LED Tubelight of approved make	Nos.	8		
d	Supplying and fixing 9W LED bulb of approved make	Nos.	0		
e	Supplying and fixing 12W LED downlighters of approved make	Nos.	24		
f	Supplying and fixing decorative led light for cove lighting etc of approved make	mtr	0		
16	<b>POP - UP BOX FOR CONFERENCE ROOM TABLE</b>				
a	Supplying and fixing pop box for conference room table comprising 2 nos.6A swich & socket and data cable /networking point.	Nos.	0		
17	<b>FAN FIXTURES</b>				
a	Supplying and fixing wall mounted fan of dia 400 mm of approved make	Nos.	20		
b	Supplying and fixing ceiling fan of dia 1200 mm of approved make	Nos.	8		
c	Supplying and fixing exhaust fan of dia 225 mm of approved make	Nos.	2		
18	<b>CALL BELL</b>				
a	Supplying and fixing Ding Dong bell of approved make outside Manager Cabin and Cash Cabin	Nos.	4		
19	<b>DATA CABLING</b>				
a	Supplying and laying CAT 6 network cable for data transmission in 20mm PVC casing	mtr	450		
b	Supplying and installing RJ45 female jack with 3 module modular box and plate	Nos.	20		
c	Supplying Data patch chord having 2 mtr CAT 6 network cable with RJ45 male jack at 2 ends	Nos.	20		
d	Supplying data network rack of size 2' X 1' for network switch	No.	2		
20	<b>TELEPHONE</b>				
a	Supplying and laying 0.5mm diameter 2 pair telephone wire for intercom connection	mtr	300		
b	Supplying and installing RJ11 female jack with 3 module modular box and plate	Nos.	20		
c	Supplying and fixing of 20 pair Krone box	Nos.	2		
<b>Total in Words</b>		<b>Seal &amp; Signature</b>			
	GST (EXTRA)				



**SPECIFICATIONS OF ELECTRICAL MATERIALS TO BE USED**

<i>Description of material</i>	<i>Make of material</i>
Light fittings & Lamps	Hevells/GM/PHILIPS/CROMPTON/WIPRO
Modular switch / socket & Industrial Switch	GM/Crabtree/ Roma/ Philips/LEGRAND L&T SCHNEIDER
Ceiling fan/Wall fan/Exhaust Fan	Bajaj/Usha/Mescab/Havells
PVC Insulated Wires (FRLS)	Mescab/KEI/RR Kabel/GMFINOLEX / HAVELLS /POLYCAB/ANCHOR /RR KABE
PVC Conduits	BCE / Plaza / AKG/GM
MCB/MCCB/DB/Change over	L&T/Siemen's/Legrand/Hager/GM/Legrand
Voltmeter/Ampere meter	L&T./AE/Juvas
Telephone cable	Finolex/Evershine KDK/Delton./ Juvas
Data cables & I.O's	D-Link/GM/ FINOLEX/
Power Contactor	MDS / L7T /C&S.
Call Bell	Ellora/Precision/Anchor/Havell
Ceiling Rose	ELLORA/PRCISSION/ ANCHOR
HRC fuse base & carriers.	GE power / SIEMENS / L & T / SCHNEIDER
HRC fuses	GE power / SIEMENS / L & T / SCHNEIDER
Capacitor	CROMPTON/SIEMENS
RCCB / ELCB / MCCB	LEGRAND / INDO-ASIAN / HAVELLS

MSME Sulabh



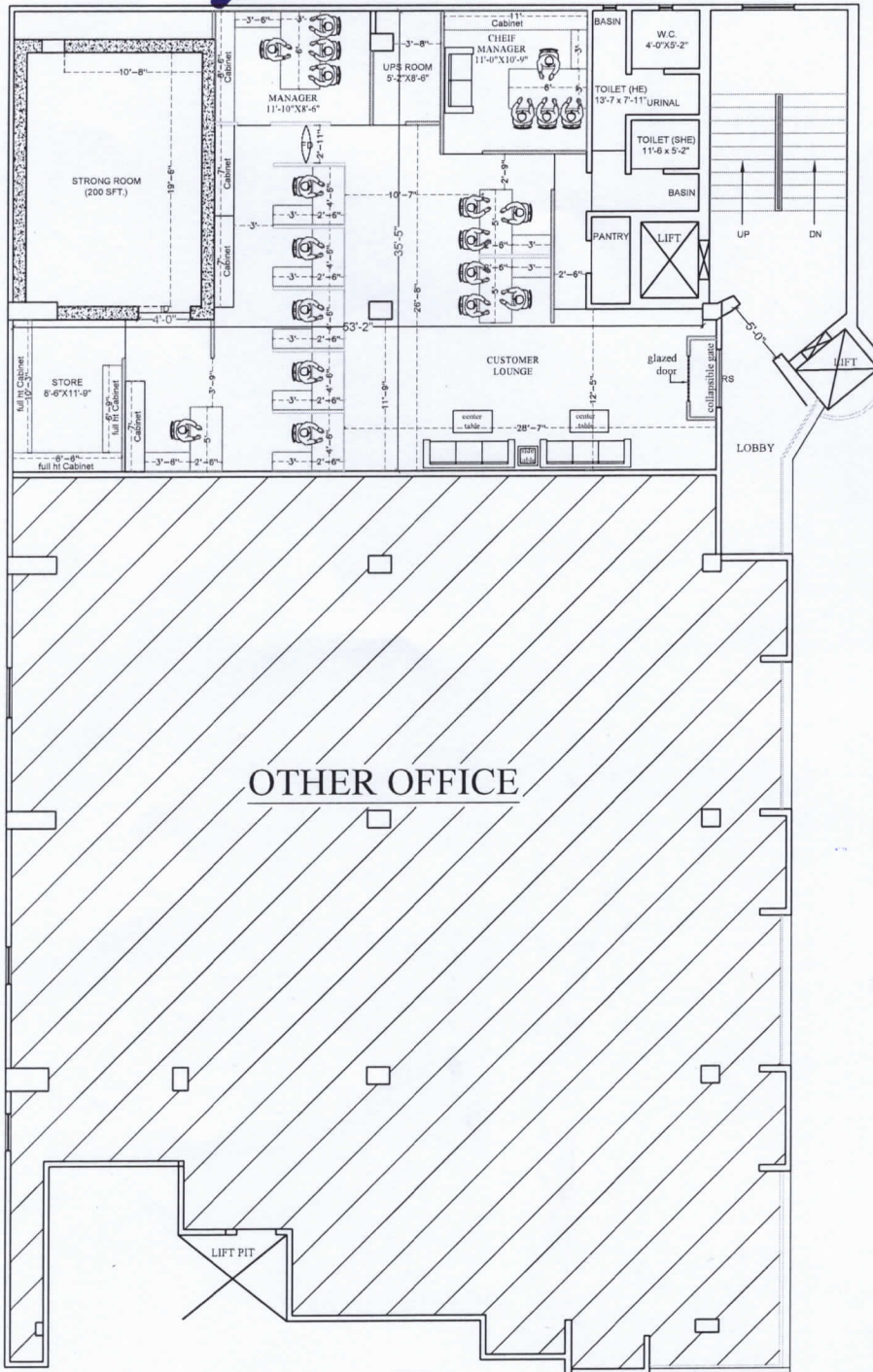
3RD FLOOR PLAN

ROAD

PROJECT		PROPOSED INTERIOR LAYOUT OF REGIONAL OFFICE & MSME SULABH AT HAZARIBAGH	
CLIENT		CANARA BANK	
DRAWN BY	NORTH		
CHECKED BY	Niraj Kumar		
SCALE		NOT TO SCALE	
DATE	REVISION	06-03-24	
SHEET TITLE		(ID-1)	
DRAWING TITLE		INTERIOR LAYOUT	
STAMP			
ARCHITECT		<b>VastuKriti</b> JAMSHEDPUR, PATNA email :- vastukriti108@gmail.com email :- vastukriti326@gmail.com	
		 architecture interior landscaping planning	



OPTION-1

RAH HAZARIBAGH

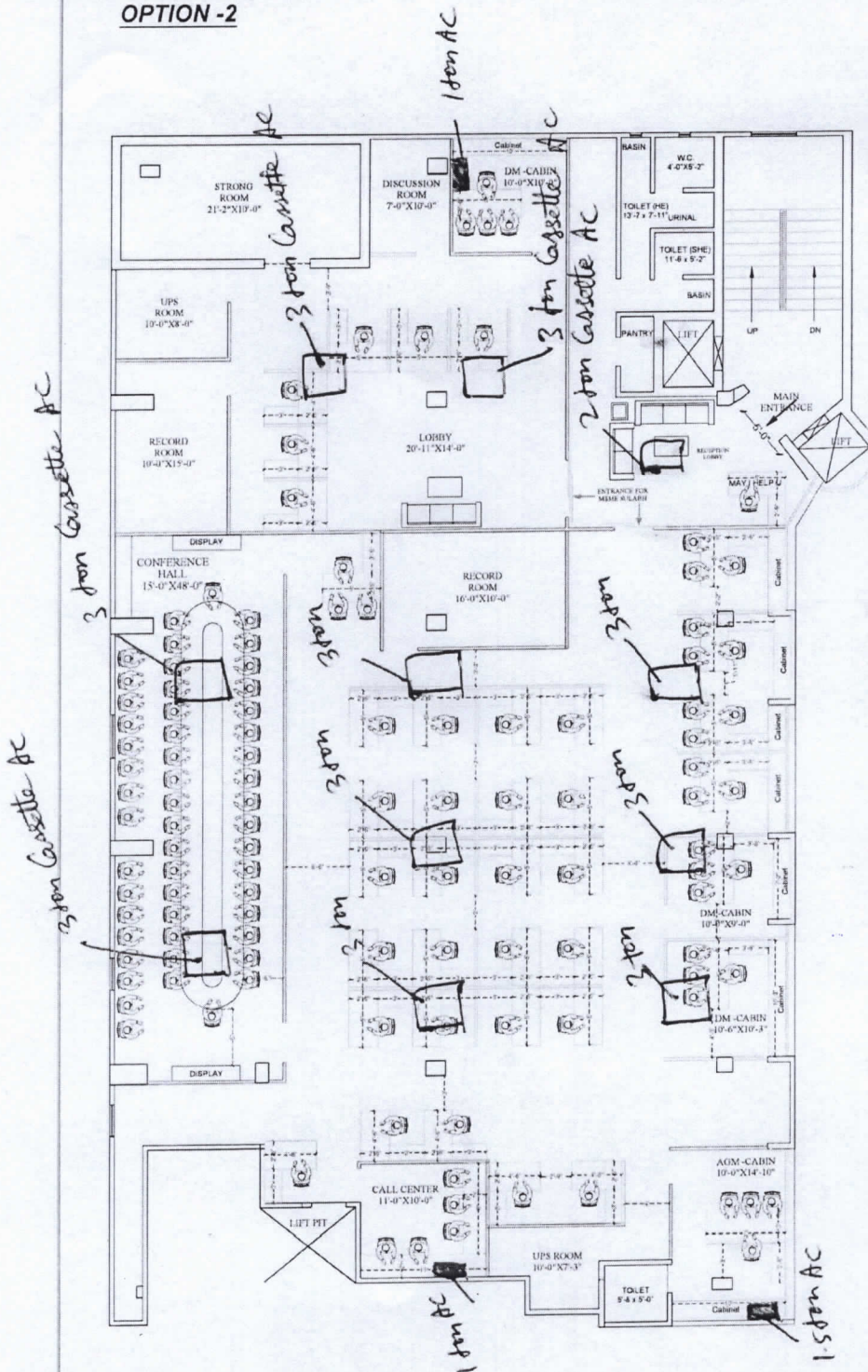


4TH FLOOR PLAN

R  
O  
A  
D

PROJECT		PROPOSED INTERIOR LAYOUT OF RAH AT HAZARIBAGH	
CLIENT		CANARA BANK	
DRAWN BY	NORTH		
CHECKED BY	Niraj Kumar		
SCALE		NOT TO SCALE	
DATE	REVISION	06-03-24	
SHEET TITLE		(ID-1)	
DRAWING TITLE		INTERIOR LAYOUT	
STAMP			
ARCHITECT			
<b>VastuKriti</b> JAMSHEDPUR, PATNA email. - vastukriti108@gmail.com email. - vastukriti326@gmail.com		architecture interior landscaping planning	

**OPTION -2**



**3RD FLOOR PLAN**

3 ton Cassette AC - 10 nos.  
 2 ton Cassette AC - 1 no.  
 1.5 ton Split AC - 1 no.  
 1 ton Split AC - 2 nos.

**R  
O  
A  
D**

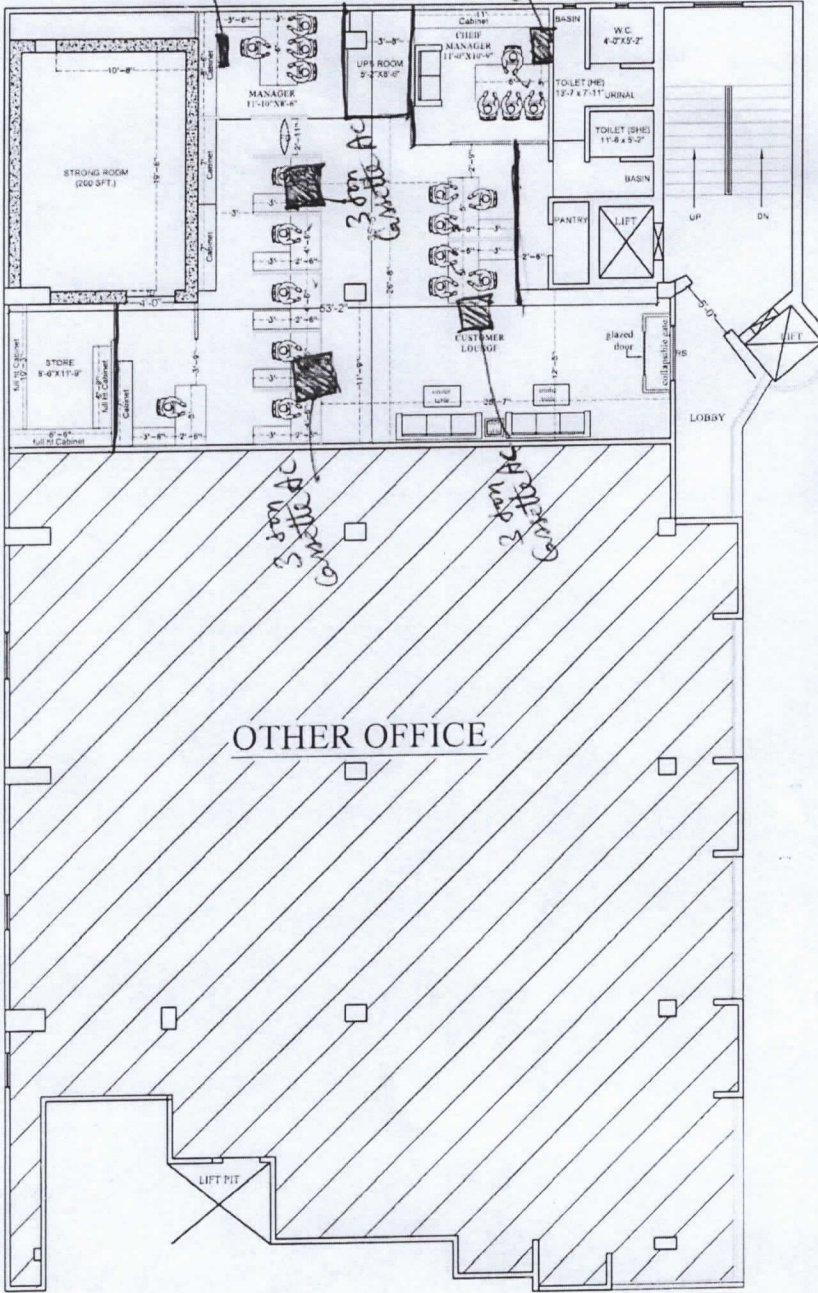
PROJECT	
PROPOSED INTERIOR LAYOUT OF REGIONAL OFFICE AT HAZARIBAGH	
CLIENT	
CANARA BANK	
DRAWN BY	NORTH
CHECKED BY	Ar. Sunny Kumar
SCALE	NOT TO SCALE
DATE	REVISION
SHEET TITLE	(10-1)
DRAWING TITLE	
INTERIOR LAYOUT	
STAMP	
ARCHITECT	VastuKriti
JAMSHEDPUR, PATNA	
email - vastukriti326@gmail.com	



Rah  
Hazaribagh

OPTION-1

*Handwritten notes:*  
 860-245-10  
 1.5 ton AC  
 3 ton AC  
 5 ton AC  
 61 feet  
 55h  
 509  
 515  
 515  
 515



OTHER OFFICE

R  
O  
A  
D

4TH FLOOR PLAN

PROJECT	
PROPOSED INTERIOR LAYOUT OF RAH AT HAZARIBAGH	
CLIENT	
CANARA BANK	
DRAWN BY	NORTH
CHECKED BY	
SCALE	
NOT TO SCALE	
DATE	REVISION
06-03-24	
SHEET TITLE	
(10.1)	
DRAWING TITLE	
INTERIOR LAYOUT	
STAMP	
ARCHITECT	
<b>VastuKriti</b> JAMSHEDPUR, PATNA email - vastukriti108@gmail.com email - vastukriti326@gmail.com	

