

**BOQ FOR PROPOSED CONSTRUCTION OF BRANCH BUILDING AT SITE NO.7/2P, PANCHANAHALLI VILLAGE,
KADUR TALUKA, CHICKMAGALURU DISTRICT, KARNATAKA – 577 182.**

S.No	DESCRIPTION	Unit	Qty	RATE	AMOUNT
	Ground Floor				
1	Dismantling & Demolition Work				
a	Demolishing Stone Rubble Masonry, Brick Masonry, Flooring etc manually/ by mechanical means including stacking of serviceable material and disposal of unserviceable material to the appropriate disposal area as per direction of Engineerin- charge.	Cft	2100.00		
b	Demolishing R.C.C. work manually/ by mechanical means including stacking of steel bars and disposal of unserviceable material to the appropriate disposal area as per direction of Engineer-in-charge.	Cft	1600.00		
c	Dismantling doors, windows and clerestory windows (steel or wood) shutter including chowkhats, architrave, holdfasts etc. complete and stacking to the appropriate disposal area as per direction of Engineerin- charge.	Sft	800.00		
2	Earthwork Excavation				
	Sl.No 1.5 : Earth work excavation by manual means for drains,canals, waste weir draft, approach channels, key trench, foundation of Bridges and such similar works, as per drawing and technical specifications, including setting out, shoring, strutting, barricading, caution lights, excavated surface leveled and sides neatly dressed disposing off or leveling the excavated stuff or sorting & stacking the selected stuff for reuse in a radius of 50 m and lift upto 1.5 m including cost of labour, tools, usage & other appurtenances required to complete the work Sl.No. 1.5.1: In ordinary/ soft rock without blasting upto 1.5 m depth	Cft	3585.0		
3	Plain Cement Concrete				
	Item No 2.1 Providing and laying in position plain cement concrete for levelling course for all works in foundation. The granite/trap/basalt crushed graded coarse aggregates and fine aggregates as per relevant IS Codes machine mixed, laid in layers not exceeding 150 mm thickness, well compacted using plate vibrators, including all lead & lifts, cost of all materials of quality, labour, Usage charges of machineries, curing, and all the other appurtenances required to complete the work as per technical specifications. Item No, 2.1.3:Mix 1:3:6 (M10) Using 40 mm nominal size graded crushed coarse agg.	Cft	596.00		
4	Random Rubble Masonry				

**BOQ FOR PROPOSED CONSTRUCTION OF BRANCH BUILDING AT SITE NO.7/2P, PANCHANAHALLI VILLAGE,
KADUR TALUKA, CHICKMAGALURU DISTRICT, KARNATAKA – 577 182.**

	Sl.No.5.1: Providing Random rubble masonry with hard stone in foundation and plinth including levelling up with cement concrete 1:6:12 (1 cement: 6 coarse sand : 12 graded stone aggregate 20 mm nominal size) upto plinth level with 5.1.1 Cement mortar 1:6 (1 cement : 6 coarse sand)	Cft	384.00		
5	Earth Filling				
	Sl.No 1.9: Filling available excavated earth (excluding rock) in sides of foundation upto plinth in layers not exceeding 20 cms. In depth, compacting each deposited layer by ramming after watering with lead upto 50m. & lift upto 1.5m.	Cft	3342.00		
6	Solid Concrete Blocks (8" thick)				
	Sl. No.6.32 Providing and constructing load bearing wall with Solid Concrete blocks of size 600x200x200mm having block density more than 1800kg/m ³ and minimum compressive strength of 4.00N/mm ² conforming to IS 2185 (Part - I) -2005 and constructed with CM 1:4 as per IS 2572:2005 including cost of all materials, labour, scaffolding and curing, usage charges of machinery etc complete as per specifications.	Cft	1209.00		
7	Burnt Brick Masonry				
	Sl.No.6.6 Providing Brick work with common burnt clay machine moulded perforated bricks of class designation 5.0 conforming to IS: 2222 in superstructure above plinth level in cement mortar 1:6 (1 cement: 6 coarse sand) With Modular bricks including cost of all materials, labour, scaffolding and usage charges of machinery & other incidental charges complete as per the direction of engineer incharge of work.	Sft	125.00		
8	4" Solid Block Work				
	Sl. No.6.34 Providing and constructing load bearing wall with Solid Concrete blocks of size 400x100x200mm having block density more than 1800kg/m ³ and minimum compressive strength of 4.00 N/ mm ² conforming to IS 2185 (Part - I) - 2005 and constructed with CM 1:4 as per IS 2572:2005 including cost of all materials, labour, scaffolding and curing, usage charges of machinery etc complete as per specifications.	Cft	198.00		
9	RCC Work below GL				

**BOQ FOR PROPOSED CONSTRUCTION OF BRANCH BUILDING AT SITE NO.7/2P, PANCHANAHALLI VILLAGE,
KADUR TALUKA, CHICKMAGALURU DISTRICT, KARNATAKA – 577 182.**

	Item No.2.2 Providing and laying in position Reinforced cement concrete for all Foundation works. The granite/ trap/ basalt crushed graded coarse aggregates and fine aggregates as per relevant IS Codes machine mixed with super plasticizers laid in finished layers, well compacted using needle vibrators, including all lead & lifts, cost of all materials, quality confirming to the requirements of relevant IS codes , labour, form work Usage charges of machinery, curing and all the other appurtenances required to complete the work as per technical specifications. Excluding cost of steel reinforcement. 2.2.2.1 M25 Design Mix Using 20 mm nominal size graded crushed coarse aggregates.				
a	RCC Column Footing	Cft	938.00		
b	Column Pedestal	Cft	188.00		
10	RCC Work above GL				
	Item.No. 2.5 Providing and laying in position Reinforced cement concrete for all Super structures of building, Road works, Water works, Irrigation works & super structure works of bridges upto 3.50 m height. The granite/ trap/ basalt crushed graded coarse aggregates and fine aggregates as per relevant IS Codes machine mixed with super plasticisers laid in layers, well compacted using needle vibrators. The cost includes all lead & lifts, cost of all materials excluding steel, quality confirming to the requirements of relevant IS codes , labour, Usage charges of machinery, curing and all other appurtenances required to complete the work as per technical specifications. Item No. 2.5.2 M25 Design Mix Using 20 mm nominal size graded crushed coarse aggregates (Inclusive of Formwork)				
a	RCC Column	Cft	169.00		
b	Plinth Beam	Cft	460.00		
c	Lintel	Cft	82.00		
d	Main Beam	Cft	249.00		
e	RCC Main slab.	Cft	1278.00		
f	RCC Shade, Loft, Racks & Drops	Sft	332.00		
g	Stair case				
	Steps	Cft	35.00		
h	Waist Slab				
	Landing	Cft	32.00		
11	Marine Grade Flush type Door				

**BOQ FOR PROPOSED CONSTRUCTION OF BRANCH BUILDING AT SITE NO.7/2P, PANCHANAHALLI VILLAGE,
KADUR TALUKA, CHICKMAGALURU DISTRICT, KARNATAKA – 577 182.**

	Providing & fixing of 32mm thick Marine Grade Flush type Door 3"x4" wood frame including shutter as per specification, including all hardware fittings of aproved make With ISI Mark, labour etc complete as per specification.	Sft	42.00		
12	Aluminium Windows & Ventilators				
	Providing and fixing in position Powder coated Aluminium Windows and Ventilators as per approved drawings with sliding shutters using Two track window frame of size 92x31.75mm bottom section 1.3mm thick, weight 1.07kg/m, sides and top sections 1.3 mm, thick, weight 0.933 kg/m.shutter frame section comprising top and bottom section of size 40mmx18mm, wall thickness 1.25mm.weight 0.417kg./m. shutter side outer 40mm x 18mm.wall thickness 1.25mm.weight 0.417 kg/m, shutter interlock section 40mmx26.7mm wall thickness 1.1 mm. thick, weight 0.469 kg/m, the shutters mounted on nylon rollers with approved quality of fixtures.				
	such as aluminium handles tower bolts etc. Providing and fixing 5.5mm.thick plain glass for shutters fitted with rubber beading all aluminium sections including cutting to required length, joints mitred sub dividing the frame tenoned and rivetted, in the assembled frame, stiffened with end clips for corners, angles etc.,and fixed to the walls, lintels, floor beams/cill as the case maybe, with necessary steel screws raul plugs or teak wood gatties.	Sft	149.00		
13	M S Grill work				
	Providing and fixing M S Grill work for windows and ventilators using 10mm M S Square rod at 3"c/c as per design including cutting, welding the same to required pattern with a coat of red lead primer ,cost of all materials, fixtures, labour and HOM complete as per specification.	Sft	149.00		
14	WPC Door for Toilet				
	Providing and fixing door for toilets with 2"x2" frame and 25mm thick WPC shutters finished on both sides as per specification required, including all fittings etc. complete as per specification and direction.	Sft	35.00		
15	M.S Sheet Door for UPS Room				
	Providing and fixing 1mm thick M.S Sheet Door with frame and diagonal braces of size 40x40x6mm angle Iron, 3.15mm thick M.s gusset plates at the junctions and corners, with handles, stoppers and locking arrangements etc. including applying a priming coat of red lead paint cost of materials, labour, HOM complete as per specifications.	Sft	18.00		
16	Internal wall & Ceiling Plastering				

**BOQ FOR PROPOSED CONSTRUCTION OF BRANCH BUILDING AT SITE NO.7/2P, PANCHANAHALLI VILLAGE,
KADUR TALUKA, CHICKMAGALURU DISTRICT, KARNATAKA – 577 182.**

	Providing Internal wall and Ceiling plastering 12mm thk cement plaster in single coat with cement mortar 1:3mix including rounding, providing & removing scaffolding, cost of materials, labour, curing, complete as per specifications.	Sft	6380.00		
17	External Wall/ Ceiling Plastering				
	Providing External wall/ Ceiling plastering 12mm thick cement plaster in single coat with cement mortar 1:3 to wall including rounding, providing and removing scaffolding, including cost of materials, labour, curing, complete as per specifications.	Sft	6290.00		
18	Water Cut Beeding				
	Providing Water cut beeding with cement mortar 1.3 mix including cost of all material & labour, curing, scaffolding etc complete. as per specification.	Rft	719.00		
19	Bed Concrete Flooring				
	Providing and laying in position Bed concrete flooring of mix 1:4:8 using 20mm and down size graded granite metal machine mixed, concrete laid in layers not exceeding 10cms thick well compacted, including cost of all materials, labour, HOM of machinery curing complete. as per specification.	Cft	738.00		
20	Double Charged Vitrified Flooring				
	Providing and fixing of Double Charged Vitrified flooring of Naveen / RAK / Nitco / Kajaria approved make 60cm x 60cm or more of 10mm thick for floor, fixing the tiles using CM 1:5mix, including cutting filling joints, cost of all materials, labour, curing etc. complete. (Basic Cost Rs 60.00)	Sft	1749.00		
21	Skirting				
	Providing skirting up to 10cm high using vitrified tiles of Naveen / RAK / Nitco / Kajaria make with cement mortar 1:3. Including cost of materials, labour, complete as per specification.	Rft	241.00		
22	Antiskid Vitrified Tiles				
	Providing and fixing Antiskid Vitrified tiles H & R Johnson/ Bell/ Kajaria / Naveen/ Spartek. 30cm x 30cm or more of 10mm thick for Toilet and Wash floor. fixing the tiles using cm1:5mix, including filling joints, cutting, fixing and cost of all materials labour etc. complete. as per direction. (Basic Cost Rs 50.00)	Sft	90.00		
23	Mat Finished Vitrified Tiles				

**BOQ FOR PROPOSED CONSTRUCTION OF BRANCH BUILDING AT SITE NO.7/2P, PANCHANAHALLI VILLAGE,
KADUR TALUKA, CHICKMAGALURU DISTRICT, KARNATAKA – 577 182.**

	Providing and fixing Mat Finished Vitrified tiles of Naveen / RAK / Nitco / Kajaria 30cm x 30cm or more of 10mm thick for Staircase. fixing the tiles using cm1:5mix, including filling joints, cutting, fixing and cost of all materials labour etc. complete. as per direction. (Basic Cost Rs 50.00)	sft	693.00		
24	Cement Pressed tiles For Ramp				
	Providing and fixing precast cement pressed chequered tiles 20mm thick for Ramp. fixing the tiles using cm1:5mix, including filling joints, cutting, fixing and cost of all materials labour etc. complete. as per direction. (Basic Cost Rs 50.00)	Sft	72.00		
25	Glazed Tiles				
	Providing & fixing Glazed tiles of H & R Johnson/ Bell/ Kajaria /Spartek/ Naveen 30cm x 60cm or more of 6mm thick for wall, fixing the tiles using 1:5 mix cement mortar, including cutting, filling joints and fixing cost of materials, labour etc. complete. (Basic Cost Rs 45.00)	Sft	327.00		
26	External wall paint				
	Providing and applying External wall paint in two coats with water proof cement paint over one coat of primer as required after thoroughly brushing the new surface, free from mortar drops and other foreign matter by scrapping including preparing the surface even and sand paper smooth, including cost of materials, labour, scaffolding complete as per specifications. Colour and shade as per direction of Engineer In Charge/ Architect. (Approved make Asian (Ace)/ Nerolac / Berger/ Dulux.)	Sft	2935.00		
27	Internal Wall Paint				
	Providing and applying Internal wall paint in two coats with Premium Acrylic Emulsion paint over one coat of primer with Putty finish as required after thoroughly brushing the new surface, free from mortar drops and other foreign matter including preparing the surface even and sand paper smoothing by Scrapping, including cost of materials, labour, scaffolding complete as per specifications. Colour and shade as per direction of Engineer In Charge/ Architect. (Approved make Asian / Nerolac / Berger/ Dulux)	Sft	2892.00		
28	Oil bound Distemper for Ceiling				
	Providing and applying two coats with oil bound washable distemper of approved brand sahade including priming coat with distemper primer after thoroughly brooming the surface free from mortar drops and other foreign matter including preparing the surface even and sand paper smooth, cost of materials, labour, complete as per specification. (Approved make Asian / Nerolac / Berger/ Dulux)	Sft	3172.00		
29	Enamel Paint				

**BOQ FOR PROPOSED CONSTRUCTION OF BRANCH BUILDING AT SITE NO.7/2P, PANCHANAHALLI VILLAGE,
KADUR TALUKA, CHICKMAGALURU DISTRICT, KARNATAKA – 577 182.**

	Providing and applying 2 coats of enamel paint over one coat of primer for wooden and metal surface with enamel paint to give an even shade, after cleaning the surface of all dirt, dust and foreign matter with sand paper including cost of all materials, labour etc. Colour and shade as per direction of Engineer In Charge /Architect. (Approved make Asian, British, Duco)	Sft	836.00		
30	Rolling Shutters with flat slats				
	Providing and fixing pull and push type rolling shutters of approved make out of 18 guage, 75mm wide cold rolled steel laths of flat slats corrugation, with side guides and bottom rail,with interlocking arrangements for steel laths by means of alternate clips, suspension shaft with High tension coil type springs two numbers, mounted on specially designed pipe shaft, with bracket plates, guide channels, ball bearing arrangements, for inside & outside locking with push & pull operations complete including pulling hooks, 4Nos. handles with all fittings and accessories, painted with a coat of red lead paint cost of materials, labour, HOM complete as per specifications. Rate should be Including of top cover.	Sft	263.00		
31	Stainless Steel Hand Rails				
	Providing and fixing 304 Grade Stainless steel hand rails of 14-gauge pipes for Ramps staircase made out of stainless steel hallow pipes, using 50mm dia for vertical @1.60mtr c/c fixed to the ramps or steps by drilling with bolts and 100mm dia MS base plates 10mm guage for fixing of vertical pipes 4- Nos anchor bolts and 40mm dia pipes fixed horizontally				
	for 2- rows top, one pipes fixed with vertical pipes another one fixed with elbows and 25mm dia pipes are fixed horizontally for 2-rows below top measure @ equal intervals including cutting, welding, bending wherever necessary with suitable caps @ tops, bottoms & corners finishing with mat/ shining etc., complete including cost and conveyance of all materials, labour for all items of work, HOM with all lead and lift, loading and unloading, transportation charges and all other incidental charges etc., complete as per specification and directions of the Engineer-in charge of the work.	Sft	54.00		
32	Collapsible Gate				

**BOQ FOR PROPOSED CONSTRUCTION OF BRANCH BUILDING AT SITE NO.7/2P, PANCHANAHALLI VILLAGE,
KADUR TALUKA, CHICKMAGALURU DISTRICT, KARNATAKA – 577 182.**

	Providing and fixing in position Collapsible Gate with single or double leaf with vertical channel 20mm x 10mm x 2mm braced with flat iron diagonals 20mmx5mm size, with top and bottom rails of t iron sections of 40x 40x 6mm with 38mm dia steel pulleys complete with bolt and nuts, locking arrangements, stoppers, handles on both sides with 7.5cms openings at 10cms. C/C applying a priming coat of red lead paint. cost of materials, labour, HOM complete as per specifications.	Sft	80.00		
33	Sanitary Chamber				
	Constructing brick masonry inspection chamber for 450 x 450mm and 450mm depth (clear inside dimension) for single pipeline, using table moulded non-modular bricks of class designation 5.0 in cement mortar 1:5 over bed of 1:2:4 RCC 200mm thk above 100mm thk PCC 1:3:6 Cement Concrete Foundations over sand bed of 100mm thk channelling in 1:2:4 cement concrete, inside plastering 12mm thick with cement mortar 1:3, finish smooth with a floating coat of cement on walls and bed concrete. The work including excavation for required depth of Gully Trap and refilling and making good in the surface with SFRC Cover and Frame complete as per standard design including cost of materials, labour charges, curing complete as per specifications.	Nos	3.00		
34	Leach Pit				
	Constructing Leach pit of size 7'0" x 7'0" x 10'0" as per direction work including earth work excavation, RR Masonry Work, providing and laying RCC Top slab of 4" thick and air vent etc complete as per specification.including cost of all materials labours etc.	Nos	1.00		
	STRONG ROOM				
1	RCC Work				
	Item No.2.5 Providing and laying in position Reinforced cement concrete for all Super structures of building , Road works, Water works, Irrigation works & super structure works of bridges upto 3.50 m height. The granite/ trap/ basalt crushed graded				

**BOQ FOR PROPOSED CONSTRUCTION OF BRANCH BUILDING AT SITE NO.7/2P, PANCHANAHALLI VILLAGE,
KADUR TALUKA, CHICKMAGALURU DISTRICT, KARNATAKA – 577 182.**

	coarse aggregates and fine aggregates as per relevant IS Codes machine mixed with super plasticisers laid in layers, well compacted using needle vibrators. The cost includes all lead & lifts, cost of all materials excluding cost of steel, quality confirming to the requirements of relevant IS codes , labour, Usage charges of machinery, curing and all other appurtenances required to complete the work as per technical specifications. Including cost of Form work. (Note : Strong room should be as per RBI Guidlines for Reinforcement details as per drawing enclosed.) (12mm dia double mat both ways at 6" c/c alternatively)	Cft	1112.00		
2	Internal wall & Ceiling Plastering				
	Internal wall and Ceiling plastering 10mm thk cement plaster in single coat with cement mortar 1:3mix including rounding, providing & removing scaffolding, cost of materials, labour, curing, complete as per specifications.	Sft	1115.00		
3	Oil bound Distemper for Ceiling				
	Providing and applying two coats with oil bound washable distemper of approved brand sahade including priming coat with distemper primer after thoroughly brooming the surface free from mortar drops and other foreign matter including preparing the surface even and sand paper smooth, cost of materials, labour, complete as per specification	Sft	229.00		
4	Internal Wall Painting				
	Providing and applying internal wall paint in two coats with Premium acralic emulsion paint over one coat of primer as required after thoroughly brushing the new surface, free from mortar drops and other foreign matter including preparing the surface even and sand paper smoothing by Scrapping, including cost of materials, labour, scaffolding complete as per specifications. With approved brand Paints to be used must be of approved quality & brand	Sft	886.00		
5	Mat Finished Vitrified Tiles				
	Providing and fixing Mat Finished Vitrified tiles 30cm x 30cm or more of 10mm thick for Staircase. fixing the tiles using cm1:5mix, including filling joints, cutting, fixing and cost of all materials labour etc. complete. as per direction. (Basic Cost Rs 50.00)	Sft	229.00		
6	Skirting				
	Providing skirting up to 10cm high using vitrified tiles with cement mortar 1:3. Including cost of materials, labour, complete as per specification.	Rft	60.00		
7	Grill Partition				

**BOQ FOR PROPOSED CONSTRUCTION OF BRANCH BUILDING AT SITE NO.7/2P, PANCHANAHALLI VILLAGE,
KADUR TALUKA, CHICKMAGALURU DISTRICT, KARNATAKA – 577 182.**

	Fabricating, providing and erecting in position of Hot dip galvanised M.S. Ornamental security Grill Gate using 75 x 12mm M S Flat for all round frame work with verticals at the center and horizontal center support M S Square of 12mm x 12mm of different				
	heights are to be fixed at 16 cms C/C for square bars of full height and at 8cms C/C for bottom rods provide ornamental C I Designers at the bottom and C I arrows in the middle and top. The entire frame work is to be fixed by means of expansion bolts to the wall with necessary drilling holes. The work includes providing two coats of enamel painting over one coat of red lead ready mix primer coat etc complete cost of all labour, painting, erection charges etc as per specification and drawings. And locker area is covered with 8mm thk Bison board, finishing with 2 coat of paint over 1 coat of primer with putty finish.	Sft	126.00		
	Staircase Head Room				
1	Solid Concrete Blocks (8" thick)				
	Sl. No.6.32 Providing and constructing load bearing wall with Solid Concrete blocks of size 600x 200x 200mm having block density more than 1800kg/m ³ and minimum compressive strength of 4.00 N/mm ² conforming to IS 2185 (Part - I) - 2005 and constructed with CM 1:4 as per IS 2572:2005 including cost of all materials, labour, scaffolding and curing, usage charges of machinery etc complete as per specifications.	Cft	201.00		
2	RCC Work				
	Item.No. 2.5 Providing and laying in position Reinforced cement concrete for all Super structures of building, Road works, Water works, Irrigation works & super structure works of bridges upto 3.50 m height. The granite/ trap/ basalt crushed graded coarse aggregates and fine aggregates as per relevant IS Codes machine mixed with super plasticisers laid in layers, well compacted using needle vibrators. The cost includes all lead & lifts, cost of all materials excluding cost of steel, quality confirming to the requirements of relevant IS codes, labour, Usage charges of machinery, curing and all other appurtenances required to complete the work as per technical specifications. Item No. 2.5.2 M25 Design Mix Using 20 mm nominal size graded crushed coarse aggregates (Inclusive of Formwork)				
a	RCC Column	Cft	27.00		
b	Lintel	Cft	5.00		
c	Main Beam				
	Staircase	Cft	30.00		

**BOQ FOR PROPOSED CONSTRUCTION OF BRANCH BUILDING AT SITE NO.7/2P, PANCHANAHALLI VILLAGE,
KADUR TALUKA, CHICKMAGALURU DISTRICT, KARNATAKA – 577 182.**

d	RCC Main slab.	Cft	149.00		
3	Aluminium Windows & Ventilators				
	Providing and fixing in position Powder coated Aluminium Windows and Ventilators as per approved drawings with sliding shutters using Two track				
	window frame of size 92x31.75mm bottom section 1.3mm thick, weight 1.07kg/m, sides and top sections 1.3 mm, thick, weight 0.933 kg/m.shutter frame section comprising top and bottom section of size 40mmx18mm, wall thickness 1.25mm.weight 0.417kg./m. shutter side outer 40mm x 18mm. wall thickness 1.25mm.weight 0.417 kg/m, shutter interlock section 40mmx26.7mm wall thickness 1.1 mm. thick, weight 0.469 kg/m, the shutters mounted on nylon rollers with approved quality of fixtures such as aluminium handles tower bolts etc. Providing and fixing 5.5mm.thick plain glass for shutters fitted with rubber beading all aluminium sections including cutting to required length, joints mitred sub dividing the frame tenoned and rivetted, in the assembled frame, stiffened with end clips for corners, angles etc.,and fixed to the walls, lintels, floor beams/ cill as the case maybe, with necessary steel screws raul plugs or teak wood gatties.	Sft	23.00		
4	M S Grill work				
	Providing and fixing M S Grill work for windows and ventilators using 12mm M S Square rod at 3"c/c as per design including cutting, welding the same to required pattern with a coat of red lead primer ,cost of all materials, fixtures, labour and HOM complete as per specification.	Sft	23.00		
5	Internal wall & Ceiling Plastering				
	Providing Internal wall and Ceiling plastering 10mm thk cement plaster in single coat with cement mortar 1:3mix including rounding, providing & removing scaffolding, cost of materials, labour, curing, complete as per specifications.	Sft	474.00		
6	External Wall/ Ceiling Plastering				
	Providing External wall/ Ceiling plastering 10mm thick cement plaster in single coat with cement mortar 1:3 to wall including rounding, providing and removing scaffolding, including cost of materials, labour, curing, complete as per specifications.	Sft	876.00		
7	Water Cut Beeding				
	Providing Water cut beeding with cement mortar 1.3 mix including cost of all material & labour, curing, scaffolding etc complete. as per specification.	Rft	114.00		
8	External wall paint				

**BOQ FOR PROPOSED CONSTRUCTION OF BRANCH BUILDING AT SITE NO.7/2P, PANCHANAHALLI VILLAGE,
KADUR TALUKA, CHICKMAGALURU DISTRICT, KARNATAKA – 577 182.**

	Providing and applying External wall paint in two coats with water proof cement paint over one coat of primer as required after thoroughly brushing the new surface, free from mortar drops and other foreign matter by scrapping including preparing the surface even and sand paper smooth, including cost of materials, labour, scaffolding complete as per specifications. Colour and shade as per direction of Engineer In Charge/ Architect. (Approved quality & brand Apex ultima, Pedilite or equilant.)	Sft	450.00		
9	Internal Wall Paint				
	Providing and applying Internal wall paint in two coats with Premium Acrylic Emulsion paint over one coat of primer with Putty finish as required after thoroughly brushing the new surface, free from mortar drops and other foreign matter including preparing the surface even and sand paper smoothening by Scrapping, including cost of materials, labour, scaffolding complete as per specifications. Colour and shade as per direction of Engineer In Charge/ Architect. (Paints to be used must be of approved quality & brand.)	Sft	370.00		
10	Oil bound Distemper for Ceiling				
	Providing and applying two coats with oil bound washable distemper of approved brand sahade including priming coat with distemper primer after throughly brooming the surface free from mortar drops and other foreign matter including preparing the surface even and sand paper smooth, cost of materials, labour, complete as per specification.	Sft	244.00		
11	Enamel Paint				
	Providing and applying 2 coats of enamel paint over one coat of primer for wooden and metal surface with enamel paint to give an even shade, after cleaning the surface of all dirt, dust and foreign matter with sand paper including cost of all materials, labour etc. Colour and shade as per direction of Engineer In Charge/ Architect.	Sft	79.00		
	Plumbing Works				
1	E W C				
	Providing and fixing EWC of approved make/ model equivalent to Parryware / Hindware, Niagara white, including seat cover and all other fittings etc. and also Providing Flush Tank of approved make/ model equivalent to Parryware Slimline including all necessary connecting pipes, labour etc. complete for finished item of work as directed by the Engineer-in-Charge./ Architect. Basic Cost Rs 5000.00	Nos	2.00		
2	Wash Basin				

**BOQ FOR PROPOSED CONSTRUCTION OF BRANCH BUILDING AT SITE NO.7/2P, PANCHANAHALLI VILLAGE,
KADUR TALUKA, CHICKMAGALURU DISTRICT, KARNATAKA – 577 182.**

	Providing & Fixing Wash Basin of approved make/model equivalent to Parryware Indus basin white including, connecting pipes,waste coupling etc. and a bottle trap of approved make/ model equivalent to Parryware/ Hindware, also Providing & Fixing Pillar cock of approved make/ model equivalent to Parryware/ Hindware including cost of all materials, labour etc. complete for finished item of work as directed by the Engineer -in- Charge/ Architect. Basic Cost Rs 3000.00	Nos	3.00		
3	Angle cock				
	Providing and Fixing Angle cock of 20mm equivalent to Parryware/ Hindware including cost, conveyance of all materials, labour, curing etc. complete for finished item of work. as directed by Engineer-in-charge/ Architect. Basic Cost Rs 650.00	Nos	4.00		
4	Stainless Steel Grating				
	Providing and Fixing Chromium painted Stainless Steel Grating of approved make & quality suitable for 6" PVC Nani Trap with necessary fittings complete as directed by Engineer-in-charge. Basic Cost Rs 400.00	Nos	2.00		
5	Health faucet				
	Providing and Fixing Health faucet equivalent to equivalent to Parryware/ Hindware Health Faucet including pipe connections etc. complete including cost, conveyance of all materials, labour etc. complete as directed by the Engineer-in-Charge. Basic Cost Rs 450.00	No.	2.00		
6	Bib cock				
	Providing & Fixing 2 in one Bib cock of 20mm dia equivalent to Parryware/ Hindware 2way Bib tap 5041 including, cost, conveyance of all materials, labour etc. complete and as directed by the. Engineer-in-Charge/ Architect. Basic Cost Rs 800.00	No.	2.00		
7	Mirror in Wash-basin Area				
	Providing and fixing 1'6" x 2'0" best quality Mirror in Wash- basin Area including rate of all materials and labour charges etc; complete as per specifications.	No.	3.00		
8	Providing inlet water pipe line with 3/4" thick PVC threaded pipe with fittings as required with all reducer fittings bends of ISI quality pipe total for all the toilets complete labor, Core cutting & materials etc complete as per direction. (Approved make Finolex / Prince)	Mtr	40.00		
9	Consealed PVC pipe line 50mm(6kg sqr) Thick for the toilet all internal pipes From wash basin to nahni trap etc complete plumbing works to the toilet fixing with gumming all labor,core cutting and meterials making good surfaces as per direction of Engineer -in-charge/ Architect. (Approved make Finolex / Prince)	Mtr	60.00		

**BOQ FOR PROPOSED CONSTRUCTION OF BRANCH BUILDING AT SITE NO.7/2P, PANCHANAHALLI VILLAGE,
KADUR TALUKA, CHICKMAGALURU DISTRICT, KARNATAKA – 577 182.**

10	Consealed PVC pipe line 75mm (6kg sqr) Thick for all internal pipes for waste water to nani trap etc complete plumbing works to the toilet including fixing with gumming all labour, core cutting and materials making good surfaces as per direction of Engineer -in-charge/ Architect. (Approved make Finolex / Prince)	Mtr	45.00		
11	Providing PVC threaded water line with 1.5" dia main connection and with reducer to 0.5" dia for all new toilets along with fittings gate valve, bends steel tap as required complete labor, core cutting and materials etc as per direction.(Approved make Finolex / Prince)	Mtr	70.00		
12	Consealed PVC Soil pipe line 110mm (6kg sqr) thick for all exterior pipes for connecting drainage line etc complete plumbing works to the toilet fixing with gumming all labour, core cutting and materials making good surfaces as per direction. of Engineer -in-charge/ Architect.(Approved make Finolex / Prince)	Mtr	50.00		
13	Providing and Fixing 1000 ltr HDPE 3 layer Syntax (Water Tank) made up of Food Grade, Antibacterial, UV and Heat Resistant over Medium Gauge M S stand of size 6 ft x 6 ft with 7ft vertical support 3 feet height from the slab. Also providing Kadapa platform of 32mm thk over the MS sections 2ft c/c both ways. as per specification and direction of Engineer -in- charge/ Architect. including cost of all materils labours etc. complete. Note: The rate includes providing 1 coat of metal primer and 2 coat of enamel paint for stand	Nos	1.00		
Electrical Work					
Main Cable / Meter Box					
1	Supplying, laying, testing and commissioning of 3.5 core 50 sqmm 1100 volts grade XLPE / PVC insulated aluminium conductor steel armoured cable laid on underground / surface of wall / ceiling etc.,with suitable MS powder coated bracket supports and clamping arrangement pipe sleeve should be provided for the cable routed through wall / partition The cable shall be laid in existing trench, cable tray clamped on to the walls using necessary fixing accessories. (Including cost of cable tray, supports, excavation, sand cushioning, brick protection and back filling) (Approved make Finolex/ Polycab / Havel/ V – Guard – FRI S. only)	Mtr	70.00		
2	Supplying and end termination for the 3.5 core 50 sqmm 1.1 KV grade XLPE aluminium conductor armoured cable using brass single compression gland and copper cable sockets, Rate should include for earthing the cable gland with copper earth clamp and copper earth wire (Approved make Siemens)	Nos	2.00		

**BOQ FOR PROPOSED CONSTRUCTION OF BRANCH BUILDING AT SITE NO.7/2P, PANCHANAHALLI VILLAGE,
KADUR TALUKA, CHICKMAGALURU DISTRICT, KARNATAKA – 577 182.**

3	Supplying and fixing of floor/ wall mounting type L.T meter board panel IP 52 category fabricated from 16/18 SWG sheet steel complete with all the painting, inter connections and following components. EB Incomer : 100Amps range 4 pole , 25 K.A (Icu=100% of Ics) rating at 415 Volt AC with thermal-magnetic release and adjustable (0.8-1.0 In) overload setting 100amps MCCB - 1No 3 Phase supply RIB indicators with 100amps MCB control/ protection -1 Set, 25 mm x 6 mm main TPN + E mains EB incoming supply 100amps Bus Bar with heat resistant colour coded sleeves - 1 Set and 3phase meter cubical CT'S etc complete. (Approved make Legrand, L & T, Merlin Gerin, GE, Schneider Electric.)	Set	1.00		
4	Supplying and laying 40mm dia GI pipe	Rmt	50.00		
5	Supplying and fixing GI pole clamp	Set	1.00		
6	Supplying and installation of GI pipe earthing by using GI pipe of size 40mm dia, 2.5 meter long Class C GI pipe, GI water funnel buried in a pit with charcoal, salt etc.as per IS standards and CI chamber cover etc., connecting with GI strip including excavation, refilling etc complete.	Set	1.00		
7	Supplying and laying of 10 SWG bare copper earthing wire in PVC conduit or on the surface of the wall or below ground as per requirement with all accessories including earthwork excavation and backfilling	Rmt	60.00		
8	Supplying and laying 2 runs of 2.5 sqmm and 1 run of 1.5 sqmm wiring FRLS insulated copper wires of approved make in 25mm dia medium gauge rigid PVC conduit of ISI mark with all accessories using screws and base plugs complete with all necessary chipping and making good of chipped portions. (Approved make Finolex / RR / Polycab/ Havels/ V – Guard - FRLS wires only)	Rmt	60.00		
9	Providing point wiring for light using 1.5 sq mm FRLS insulated copper conductor wire for phase neutral and earth wires in 20 mm dia approved make ISI mark medium gauge rigid PVC conduit run on the surface of wall, concealed type, with all accessories. (Approved make Finolex / RR / Polycab/ Havels/ V – Guard - FRLS wires only)				
	including approved make modular type switches and accessories, ceiling rose / holders etc as per requirement complete with necessary chipping work and making good of chipped portions as per requirement. (Legrand (Myrius / Arteor) / Schneider (Zencelo), Anchor Roma)	Pts	10.00		

**BOQ FOR PROPOSED CONSTRUCTION OF BRANCH BUILDING AT SITE NO.7/2P, PANCHANAHALLI VILLAGE,
KADUR TALUKA, CHICKMAGALURU DISTRICT, KARNATAKA – 577 182.**

10	Supplying and installation LED Bulkhead light of approved make. (Approved Make Havell's / Wipro/ Philips / Crompton Greaves)	Nos	10.00		
	Compound wall				
1	Earthwork Excavation				
	Sl.No 1.5 : Earth work excavation by manual means for drains,canals, waste weir draft, approach channels, key trench, foundation of Bridges and such similar works, as per drawing and technical specifications, including setting out, shoring, strutting, barricading, caution lights, excavated surface leveled and sides neatly dressed disposing off or leveling the excavated stuff or sorting & stacking the selected stuff for reuse in a radius of 50 m and lift upto 1.5 m including cost of labour, tools, usage & other appurtenances required to complete the work Sl.No. 1.5.1: In ordinary/ soft rock without blasting upto 1.5 m depth	Cft	1056.00		
2	Plain Cement Concrete				
	Item No 2.1 Providing and laying in position plain cement concrete for levelling course for all works in foundation. The granite/ trap/ basalt crushed graded coarse aggregates and fine aggregates as per relevant IS Codes machine mixed, laid in layers not exceeding 150 mm thickness, well compacted using plate vibrators, including all lead & lifts, cost of all materials of quality, labour, Usage charges of machineries, curing, and all the other appurtenances required to complete the work as per technical specifications. Item No, 2.1.3 Mix 1:3:6 (M10) Using 40 mm nominal size graded crushed coarse agg.	Cft	264.00		
3	Random Rubble Masonry				
	Sl.No.5.1:Providing Random rubble masonry with hard stone in foundation and plinth including levelling up with cement concrete 1:6:12 (1cement: 6 coarse sand : 12 graded stone aggregate 20 mm nominal size) upto plinth level with 5.1.1 Cement mortar 1:6 (1 cement : 6 coarse sand)	Cft	454.00		
4	Coursed Rubble Masonry				
	Sl.No 5.4: Providing Size Stone masonry with hard stone in foundation & plinth with Cement mortar 1:6 (1 cement : 6 coarse sand)	Cft	289.00		
5	D P C				
	Providing and laying in position Cement concrete of mix 1:3:6 using 20mm and down size graded granite metal machine mixed, concrete laid in layers not exceeding 10cms thick well compacted, including cost of all materials, labour, HOM of machinery curing complete. as per specification.	Cft	100.00		
6	Solid Concrete Blocks (6" thick)				

**BOQ FOR PROPOSED CONSTRUCTION OF BRANCH BUILDING AT SITE NO.7/2P, PANCHANAHALLI VILLAGE,
KADUR TALUKA, CHICKMAGALURU DISTRICT, KARNATAKA – 577 182.**

	Sl.No.6.33 Providing and constructing load bearing wall with Solid Concrete blocks of size 400x 150x 200mm having block density more than 1800kg/m ³ and minimum compressive strength of 4.00 N/mm ² conforming to IS 2185 (Part - I) - 2005 and constructed with CM 1:4 as per IS 2572:2005 including cost of all materials, labour, scaffolding and curing, usage charges of machinery etc complete as per specifications.	Cft	719.00		
7	RCC Work				
	Item.No. 2.5 Providing and laying in position Reinforced cement concrete for all Super structures of building, Road works, Water works, Irrigation works & super structure works of bridges upto 3.50 m height. The granite/trap/basalt crushed graded coarse aggregates and fine aggregates as per relevant IS Codes machine mixed with super plasticisers laid in layers, well compacted using needle vibrators. The cost includes all lead & lifts, cost of all materials excluding cost of steel , quality confirming to the				
	codes, labour, Usage charges of machinery, curing and all other appurtenances required to complete the work as per technical specifications. Item No. 2.5.2 M25 Design Mix Using 20 mm nominal size graded crushed coarse aggregates (Inclusive of Formwork)				
a	RCC Column Footing	Cft	113.00		
b	RCC Column	Cft	21.00		
8	External Wall Plastering				
	Providing External wall plastering 12mm thick cement plaster in single coat with cement mortar 1:3 to wall including rounding, providing and removing scaffolding, including cost of materials, labour, curing, complete as per specifications.	Sft	3110.00		
9	Water Cut Beeding				
	Providing Water cut beeding with cement mortar 1.3 mix including cost of all material & labour, curing, scaffolding etc complete. as per specification.	Rft	605.00		
10	External wall paint				

**BOQ FOR PROPOSED CONSTRUCTION OF BRANCH BUILDING AT SITE NO.7/2P, PANCHANAHALLI VILLAGE,
KADUR TALUKA, CHICKMAGALURU DISTRICT, KARNATAKA – 577 182.**

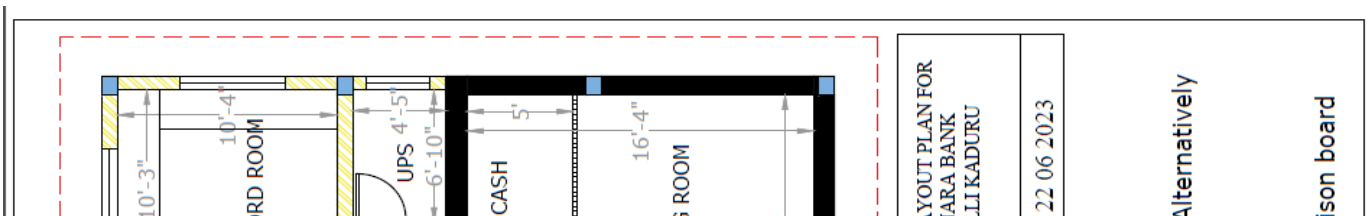
	Providing and applying External wall paint in two coats with water proof cement paint over one coat of primer as required after thoroughly brushing the new surface, free from mortar drops and other foreign matter by scrapping including preparing the surface even and sand paper smooth, including cost of materials, labour, scaffolding complete as per specifications. Colour and shade as per direction of Engineer In Charge/ Architect. (Paints to be used must be of approved quality & brand.)	Sft	3110.00		
11	M S Gate				
	Providing and Fixing M S Gate using 50mm x 50mm 14gauge M S Hollow pipe frame work and 35mm x 6mm and 16 x 16mm square rods for verticals alternatively spaced at 4cm c/c in two halves and 40mm x 6mm ms flats for horizontal member and at the top cost iron spikers are provided at alternate verticale member etc complete. The work includes cost of all materials, labour charges for all items of work, hire charges for welding, cutting and grinding equipment, and electricity charges with lead and lift, loading and unloading charges, painting with a coat of red lead paint etc.complete as per specification.	Kg	415.00		
12	M.S. Cattle Trap				
	Providing and fixing M.S. Cattle Trap for entrance gate with 50mm dia MS Hollow Pipe of 14 guage, spaced at 50 mm clear space between at regular intervals horizontally, welded to 75 mm dia MS				
	Hollow pipe placed vertically at 600mm at regular intervals, work including painting with a coat of red lead paint, cost of all materials, labours etc complete. as per specification.	Sft	48.00		
13	Enamel Paint				
	Providing and applying 2 coats of enamel paint over one coat of primer for wooden and metal surface with enamel paint to give an even shade, after cleaning the surface of all dirt,dust and foreign matter with sand paper including cost of all meterials, labour etc. Colour and shade as per direction of Engineer In Charge/ Architect. (Paints to be used must be of approved quality & brand.)	Sft	276.00		
14	Interlock Pavers				

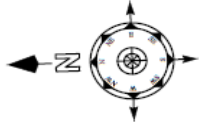
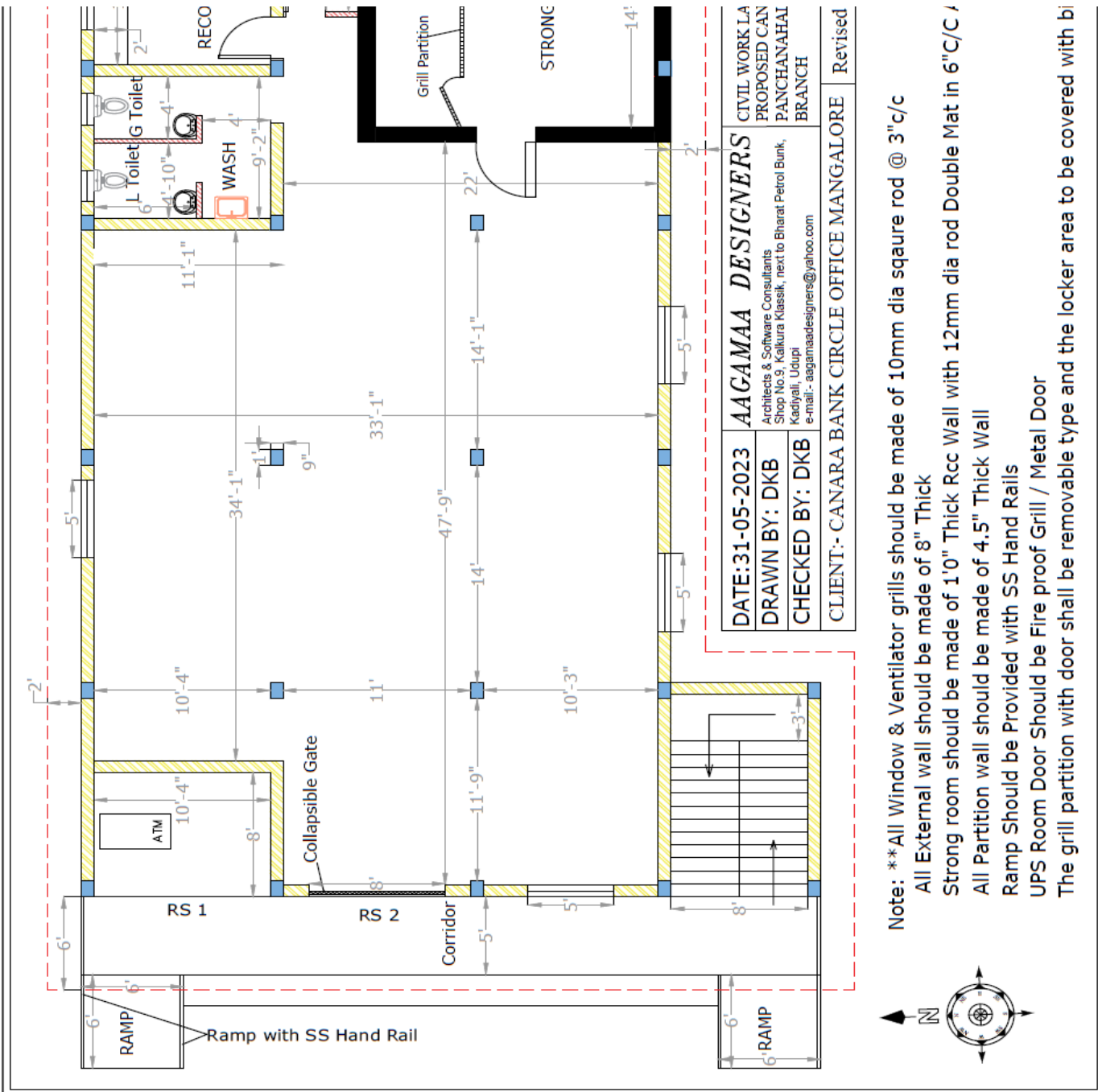
**BOQ FOR PROPOSED CONSTRUCTION OF BRANCH BUILDING AT SITE NO.7/2P, PANCHANAHALLI VILLAGE,
KADUR TALUKA, CHICKMAGALURU DISTRICT, KARNATAKA – 577 182.**

	Providing and laying heavy duty cobble stones 75mm thick interlock pavers, using cement and course sand for manufacture of blocks of approved size, shape and colour with a minimum compressive strength of 281 kg per m2 over 50mm thick sand bed (average thickness) and compacting with plate vibrator having 3 tons compaction force thereby forcing part of sand underneath to come up in between joints, final compaction of paver surface joints into its final level, including cost of materials, labour and Usage charges of machinery complete as per specifications.	Sft	1400.00		
15	Providing and laying in position TOR steel of approved make including cost of material, binding wire, nails, labour for bar bending and laying as per design. The size of steel may vary as per design and requirement.	Tonne	12.00		
Total Cost of the Project					

GST Extra as applicable.

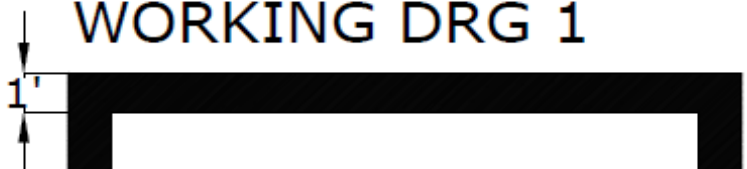
Contractor Name with Seal

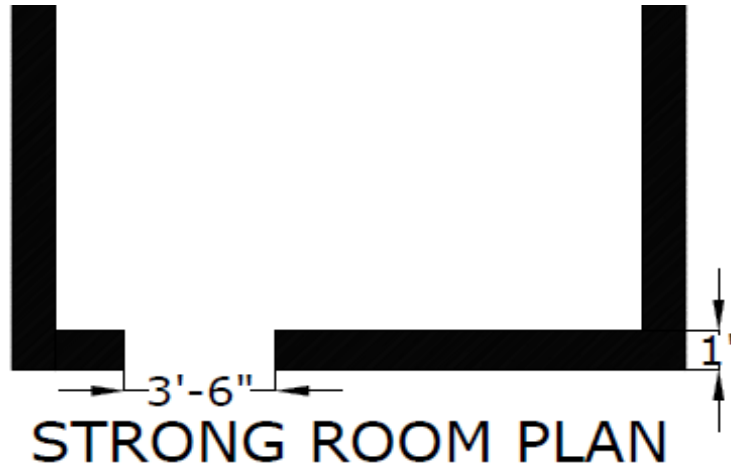




Note: **All Window & Ventilator grills should be made of 10mm dia square rod @ 3" c/c
 All External wall should be made of 8" Thick
 Strong room should be made of 1'0" Thick Rcc Wall with 12mm dia rod Double Mat in 6"C/C /
 All Partition wall should be made of 4.5" Thick Wall
 Ramp Should be Provided with SS Hand Rails
 UPS Room Door Should be Fire proof Grill / Metal Door
 The grill partition with door shall be removable type and the locker area to be covered with bi

WORKING DRG 1



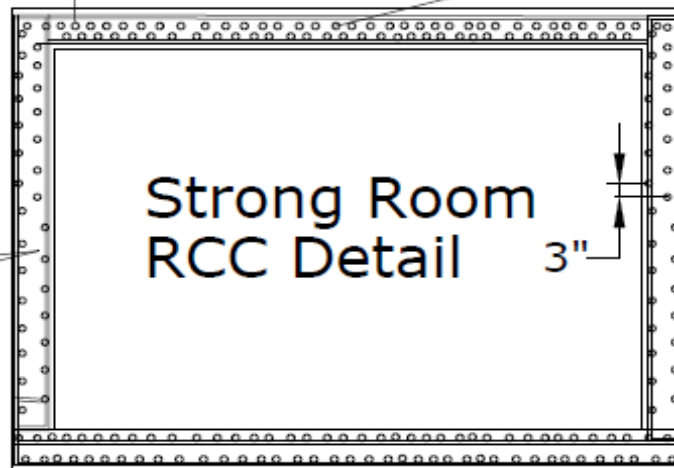


WORKING DRG 2

12mm dia 6" c/c bothways & on both faces of ceiling

Ceiling same as side wall

side wall with
rcc 12" thick
12mm dia @ 6" c/c
both Ways & on both
faces of wall



vertical
rods in 2 side
6" c/c with 12mm rod
both ways

RCC ratio with 1:1.5:2 mix

bottom 1' thick slab 12mm rod both ways at 6" C/C
and on both faces of the floor

ARCHITECT : AAGAMAA DESIGNERS UDUPI

PROJECT : PROPOSED STRONG ROOM FOR CANARA BANK PANCHANAHALLI BRANCH, KADURU

Typical Plan Only

SPECIFICATIONS FOR CONSTRUCTION OF RCC STRONG ROOM

The Strong Room is a complete Reinforced Cement Concrete structure constructed

either in cellar portion, ground or first floor as per the availability of space in the branch premises. The Strong Room is to be fixed with a Godrej / Steelage / approved security Fixtures Company's 'A' quality / light quality of door with a grill gate. Instructions in respect of erection and specifications of the door as contained in the suppliers' leaflet shall be followed. Two sets of drawings and literature will be supplied directly by M/s. Godrej / Chubb Steelage / approved security fixtures companies like Methodex, Guardwel, etc.

Specifications for the Strong Room are as follows:

- ✓ WALLS RCC 1:1.5: 3 (M20) 30cm (12") thick. The reinforcement shall be two way double reinforcement with 12 mm dia MS bars at 6" centre to centre in both the directions staggered so that the reinforcement bar will be at every 3" in cross section RCC 1:1.5: 3. (M20)
- FLOOR 15 cm (6") thick heavily reinforced over the existing plain cement concrete flooring for strong room in ground floor and over existing RCC slabs in strong room in upper floor (the strength of the slab in such cases would have to be checked to allow for the additional dead and super imposed load) 1:1.5: 3 (M20)
- ✓ CEILING 30 cm (12") thick, where it is not feasible to provide an RCC slab as specified, the ROOF ceiling would have to be fortified with MS grills consisting of 12 mm rods spaced 75 mm centre in angle iron frame work. The reinforcement shall be two way doubly reinforcement with 12 mm dia MS bars at 6" centre to centre in both the directions staggered so that the reinforcement bar will be at every 3" in cross section.
- ✓ STRONG ROOM DOOR Standard banker's quality Strong Room door specified for 'B' class Currency Chests with a slab which is at least 29 mm over rebates (including a drill resisting layer of 6 mm and an anti oxy-acetylene blow pipe layer of 3 mm). Doors with the above specifications manufactured either by any approved Security fixtures manufacturing company like Methodex, Guardwel, etc or M/s Godrej Boyce Mfg. Pvt. Ltd Or M/s. Steelage Industries Ltd by the following names:-
- Godrej Class I Defender Doors, Steelage Special 'A' quality Strong Room Door.

✗ **The Minimum reinforcements as advised by RBI are given below:**

Walls: 12 mm dia mild steel / tor steel @ 6" c/c both ways and on both faces of the walls (a formation of reinforcement mat of about 6" x 6") on either face of the wall to be obtained.

Floor:

Same as in the case of walls but only on one face.

Ceiling:

Same as in the case of walls.

Further, where reinforcements are proposed on two faces of a R C C member, it shall be staggered in such a manner that any view taken at right angles to the mat formation would show reinforcement at every (3") c/c in elevation (in respect of walls) and in plan (in respect of ceiling slab). The above reinforcements are only the minimum and depending on the structural requirements the structural consultants for the work should design and detail out actual reinforcements required but these shall not be less than what are specified above.

III COLUMN SIZES

Two columns of 10" x 10" size with 6 Nos. of 12 mm dia for steel main rods and 6 mm dia binder rods are to be done only after fixing the door and ascertaining the plumb line.

IV. AIR VENTILATORS	GODREJ	STEELAGE
Overall opening	24' x 24'	24' x 24'
Clear Opening	18' x 18'	18' x 18'

When the Strong Room is divided into 2 portions for cash and lockers, two ventilators for both the rooms are to be provided.

V. FIXING OF DOORS

While fixing the door, special attention should be paid for fixing it in plumb, as the slightest bend (out of plumbing) will cause improper working of the door. Always, help of a Godrej / Steelage / approved security fixtures manufacturing company mechanic should be taken.

VI. PARTITION FOR SAFE DEPOSIT VAULT INSIDE THE STRONG ROOM

In case the branch has provision for safe deposit lockers, a wooden partition / required 4.5" thick wall upto the ceiling level with a door having a Godrej night latch is to be erected in the Strong Room to separate the safe deposit lockers room and that of the area required for keeping the cash and security items.

VII. VENTILATING HOLES

Where Godrej FBR ventilation / required exhaust fan is not ordered by us, vent holes are to be provided. About 4 Nos. 1" dia holes are to be provided in the Strong room wall at 8' height from the floor level. The purpose of these vent holes is to avoid the vacuum inside the strong room which will result in a problem to open the strong room door. The top of the holes should open upwards inside the

VIII. **ELECTRIC WIRING**

It must be noted that the electric wiring should be arranged separately for the Strong Room and it is to be connected to a plug outside. In effect when the plug is removed there should not be live electric wires in the walls, roof or floor of the Strong Room. Plug points at four top corners and four bottom corners are to be provided inside the Strong Room apart from regular lights.

IX **CONSTRUCTION SUPERVISION**

A copy of the leaflet and plan may be given to the owner / architect for attending to the construction. Adequately in advance, the nearest Godrej / Steelage / approved security fixtures manufacturing company stockist should be requested to send their experienced mechanic at the time of erecting and fixing the door.

The charges will be borne by the Bank as the door is our property.

X. **GENERAL**

Important points are enumerated:

a) Do not part with the keys of the door and of the gate. One set should be kept under double lock and only one set should be held by the joint key holders as per double lock procedure. When the door is installed, keys should be tried several times to assure smooth working. When the concrete sets, the door should be tried and keys also tried as often as possible for their smooth working. Unless the door is fixed on an even level (i.e., plumb line) smooth working of the door, gate and the locking arrangements will be difficult.

b) The key holes should be safely packed so that even dust does not enter them. The locking arrangement is very delicate and as such special care should be taken in this behalf.

c) There is an oiling hole on the top of the hinge of the door, which should be protected properly against dust or water. When the erection is over, it should be oiled for smooth working.

In case of any difficulty in understanding any point in this regard, GAD, HO or the nearest Godrej / Steelage / approved security fixtures manufacturing company agents should be contacted without delay.
