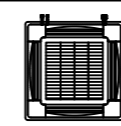


SB1a @ 5'6" ht-bottom
 1. 5amp socket - 1no (for wall fan)

SB1b @ 7'0" ht - bottom
 1. 15amp socket for AC-1 no



CASSETTE AC

SB1 @ 4'6" ht
 1.5amp switch and socket-1no
 2. 15 amp switch for cassette AC-2no(2TR)
 3.light point -17no
 (7 primary 10 secondary)
 4.wall fan-6no
 5.Light point switch for Entrance-2 nos
 6. Light point for Signage board light- 1 no

SB2@ 4'6" ht
 1.5amp switch and socket-1no
 2. 15 amp switch for Cassatte AC-2no(2 TR)
 3. ceiling light point -11no
 (5 primary,7 secondary)
 4.wall fan- 2 no

SB3 @ 4'6" ht - bottom(BM cabin)
 1. ceiling light - 4no
 (,2 primary,2secondary)
 2. 5amp switch&socket - 1no

SB4 @ 3'0" ht - bottom(BM cabin)
 2. 5amp switch&socket - 1no
 3. wall fan switch-1 no
 4. 15 amp switch for AC(1 TR)
 5. Ceiling light point -1nos

SB5 @ 3'0" ht - bottom(manager cubical)
 2. 5amp switch&socket - 1no
 3. wall fan switch-1 no
 4. light point-3 no
 (2 primary,1 secondary)
 5. 15 amp switch for AC-1TR- 1 no

SB6 @ 4'6" ht - bottom(UPS Room)
 1. 5amp switch&socket - 1no
 2. Ceiling fan switch-1 no
 3. Tube light-1no
 4. 1 no light point in passage
 5. 5 amp Exhaust fan switch -1 no

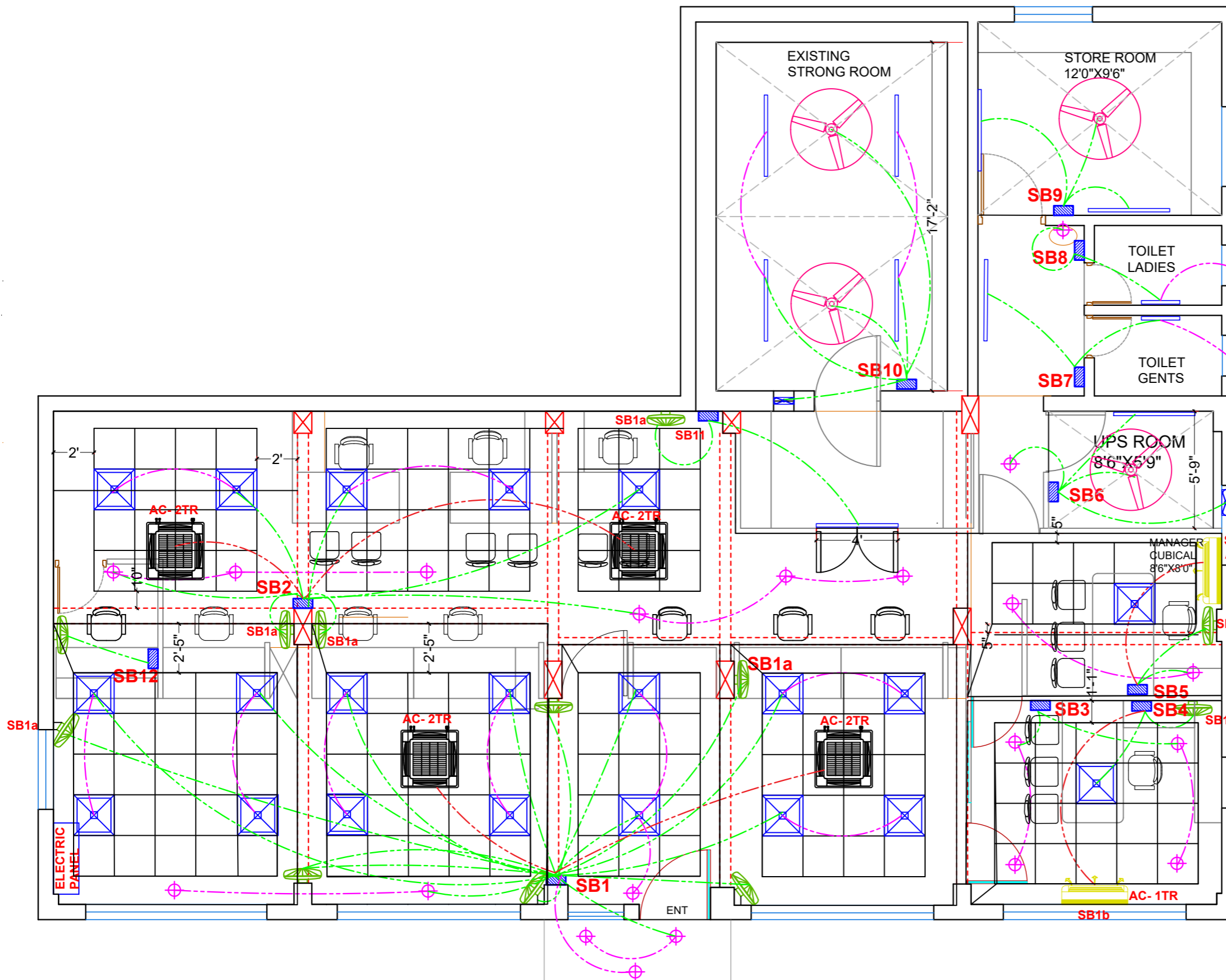
SB7 @ 4'6" ht - bottom(Gents Toilet)
 1. 5amp switch&socket - 1no
 3.tube light-1no(primary)
 4. Exhaust fan-1 (secondary)
 5. tube light -1 no (primary)

SB8 @ 4'6" ht - bottom(Ladies Toilet)
 1. 5amp switch&socket - 1no
 2. switch for light point above wash basin
 3.tube light-1no(primary)
 4. Exhaust fan-1 (secondary)

SB9 @ 4'6" ht - bottom(Store room)
 1.5amp switch&socket - 1no
 2.Ceiling fan switch-1 no
 3.tube light-2no
 (2primary)

SB10 @ 4'6" ht - bottom(strong room)
 1.5amp switch&socket - 1no
 2.Ceiling fan switch-2 no
 3.tube light-4no
 (2primary,2 secondary)
 4. Exhaust fan switch -1 no

SB11 @ 4'6" ht - bottom (near Strong rm)
 1.5amp switch&socket - 1no
 2.wall fan switch-1 no
 3.tube light-1no



CARPET AREA AS PER POLYLINE = 1884.7 SQFT

SB12 @ 3'0" ht - bottom (CASHIER)
 1.5amp switch&socket - 1no
 2. 5 amp switch for Wall fan -1 no

FALSE CEILING AND ELECTRICAL LAYOUT

PROJECT: PROPOSED OFFICE INTERIOR WORK FOR CANARA BANK HINJEWADI BRANCH PUNE	TITLE : ELECTRICAL LAYOUT	JYOTI PANSE ASSOCIATES 805/A-3 , Reverie,Bhandarkar institute Road,above Skoda showroom,pune-411004. PH : 2567 2994 E-MAIL : studio@jpa-architects.in
REVISION :	DRWG. CODE :	
	DATE : 10-08-24	
	DEALT :	
	CHKD. BY : K.J.P	