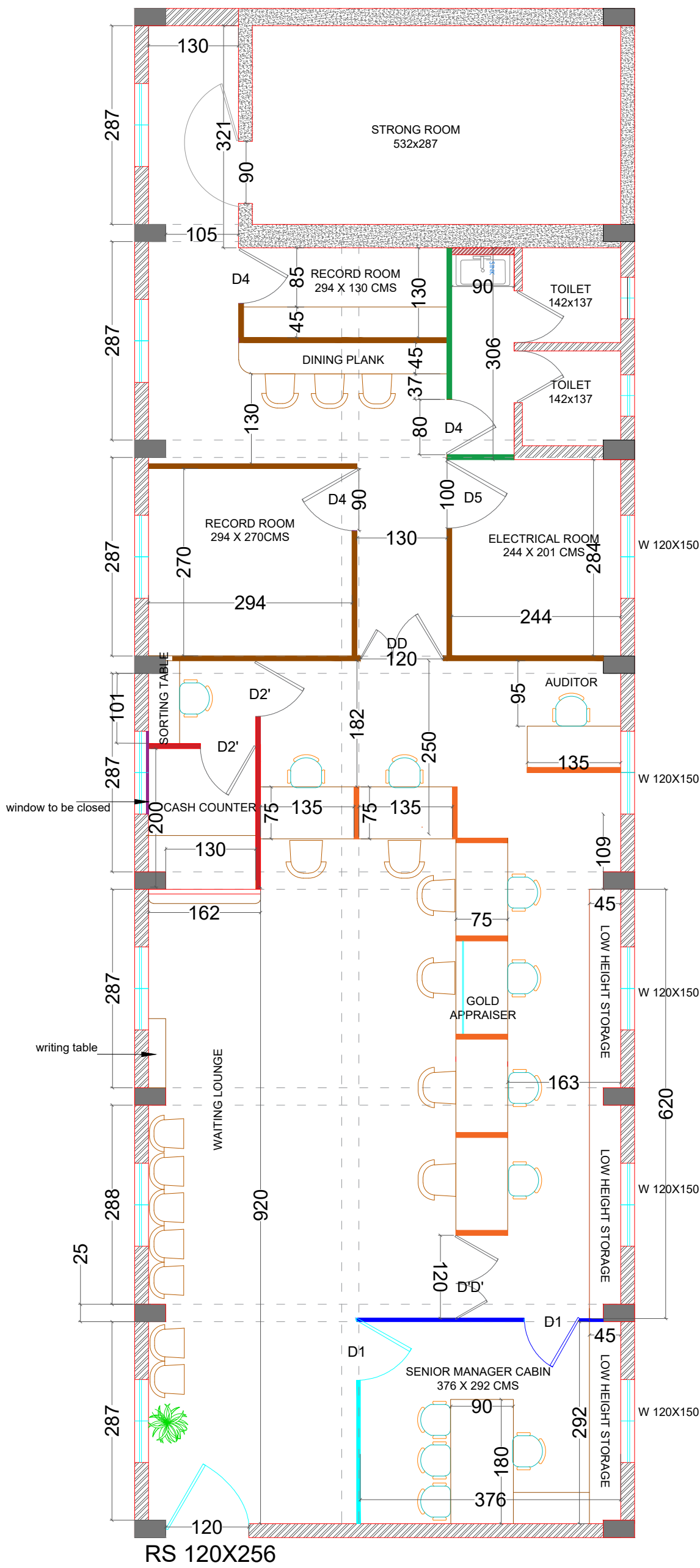


**PROPOSED INTERIOR FITOUT DETAILS
FOR
CANARA BANK AMBALLUR, THRISSUR**

EXISTING BANK IS AT FIRST FLOOR OF THE BUILDING



PROPOSED BANK LAYOUT

PROJECT

PROPOSED INTERIORS FOR
CANARA BANK
AMBALLUR BRANCH
THRISSUR

CLIENT

CANARA BANK

TITLE

PROPOSED LAYOUT

DRAWN BY

SANJANA SURESH

UNITS

CMS

SCALE

NTS

REVISION

AREA DETAILS

- MANAGER CABIN - 118 sqft
- LOBBY - 338 sqft
- STRONG ROOM - 164.3 sqft
- DINING ROOM - 53.7 sqft
- RECORD ROOM - 126.8 sqft
- ELECTRICAL ROOM - 74.5 sqft
- BANKING HALL
(including lobby area) - 788 sqft
- TOTAL CARPET AREA : 1505 SQFT
(Without toilet & strong room walls)

LEGEND

- GLAZED PARTITION FOR MANAGER CABIN
- SEMI GLAZED DOUBLE SIDED LAMINATE PARTITION
- HALF HEIGHT TABLE PARTITION WITH GLAZING & DOUBLE SIDED LAMINATE
- CASH COUNTER PARTITION WITH GLAZING & DOUBLE SIDED LAMINATE
- FULL HEIGHT PARTITION WITH CEMENT BOARD INSIDE & PLY WITH LAMINATE OUTSIDE
- FULL HEIGHT PARTITION WITH BOTH SIDE CEMENT BOARD

SEAL

FINS PROJECT
MANAGEMENT CONSULTANTS
THRISSUR

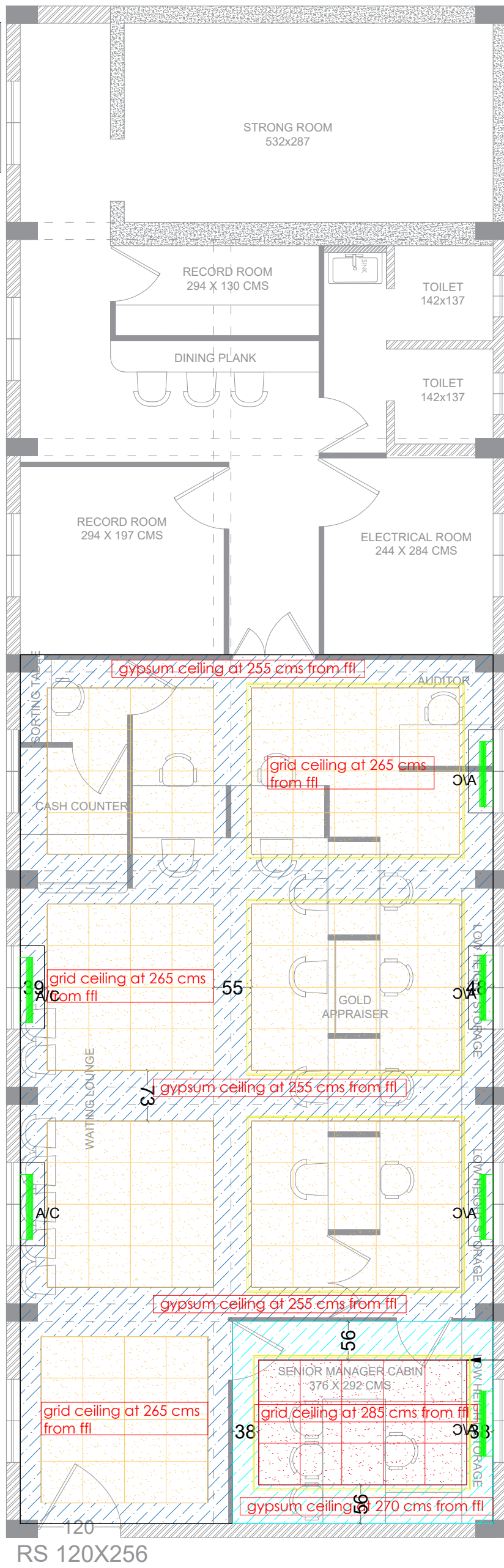
ISSUED ON:
25-05-2023

SHEET NO:
AL03

CANARA BANK
AMBALLUR BRANCH-THRISSUR

EXISTING BANK IS AT FIRST FLOOR OF THE BUILDING

NOTE : To accommodate ac with its best height an upward recession of 25cms has to be provided for all ac units except for the manager cabin in the false ceiling



PROPOSED FALSE CEILING LAYOUT

PROJECT

PROPOSED INTERIORS FOR
CANARA BANK
AMBALLUR BRANCH
THRISSUR

CLIENT

CANARA BANK

TITLE

PROPOSED LAYOUT

DRAWN BY

SANJANA SURESH

UNITS

CMS

SCALE

NTS

REVISION

AREA DETAILS

- MANAGER CABIN - 118 sqft
- LOBBY - 338 sqft
- STRONG ROOM - 164.3 sqft
- DINING ROOM - 53.7 sqft
- RECORD ROOM - 126.8 sqft
- ELECTRICAL ROOM - 74.5 sqft
- BANKING HALL (including lobby area) - 788 sqft
- TOTAL CARPET AREA : 1505 SQFT (Without toilet & strong room walls)

LEGEND

	gypsum ceiling @ 255 cms from ffl
	gypsum ceiling @ 270 cms from ffl
	grid ceiling @ 265 cms from ffl
	grid ceiling @ 285 cms from ffl

cove light provision



ISSUED ON:
20-07-2023

SHEET NO:
AL04

CANARA BANK
AMBALLUR BRANCH-THRISSUR

SEAL

FIN'S PROJECT
MANAGEMENT CONSULTANTS
THRISSUR

EXISTING BANK IS AT FIRST FLOOR OF THE BUILDING



RS 120X256
PROPOSED REFLECTED CEILING LAYOUT

PROJECT
PROPOSED INTERIORS FOR
CANARA BANK
AMBALLUR BRANCH
THRISSUR

CLIENT
CANARA BANK

TITLE
PROPOSED LAYOUT

DRAWN BY
SANJANA SURESH

UNITS
CMS

SCALE
NTS

REVISION

AREA DETAILS

MANAGER CABIN - 118 sqft
LOBBY - 338 sqft
STRONG ROOM - 164.3 sqft
DINING ROOM - 53.7 sqft
RECORD ROOM - 126.8 sqft
ELECTRICAL ROOM - 74.5 sqft
BANKING HALL (including lobby area) - 788 sqft
TOTAL CARPET AREA : 1505 SQFT (Without toilet & strong room walls)

LEGEND

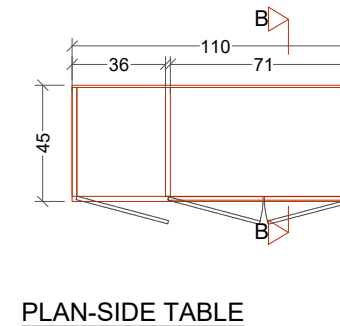
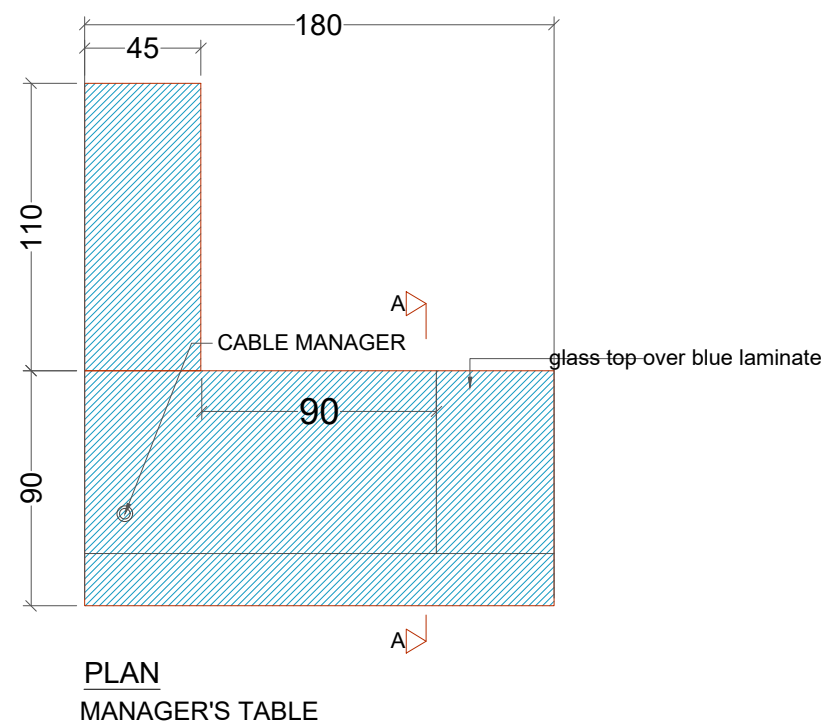
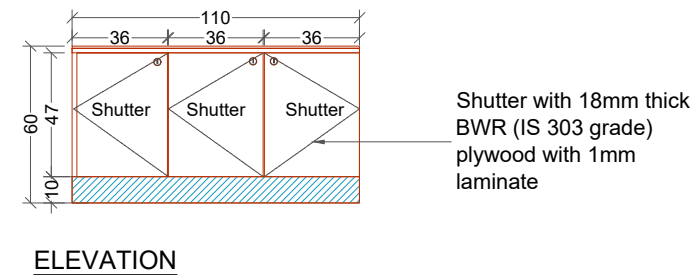
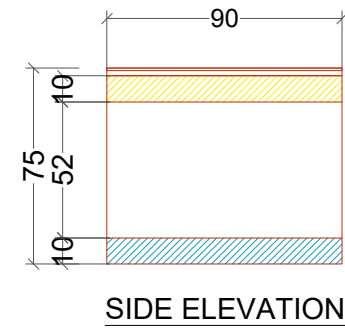
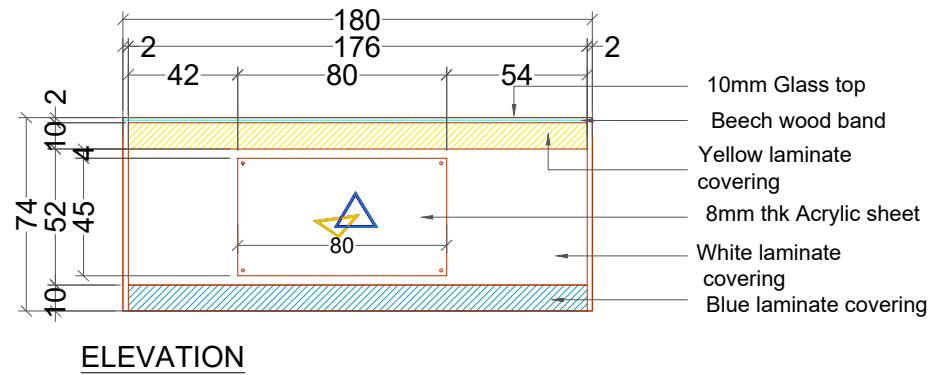
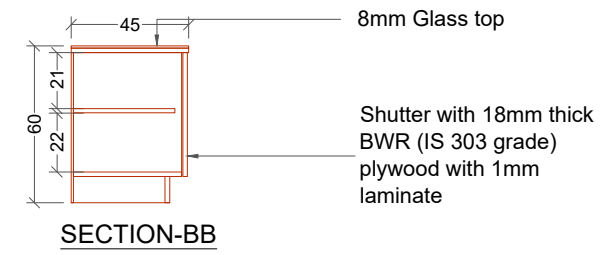
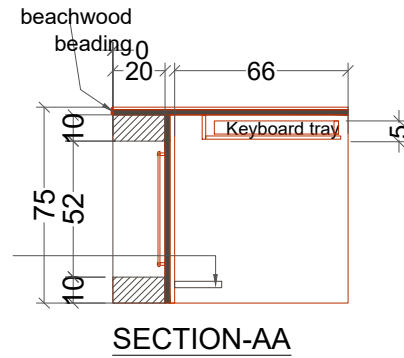
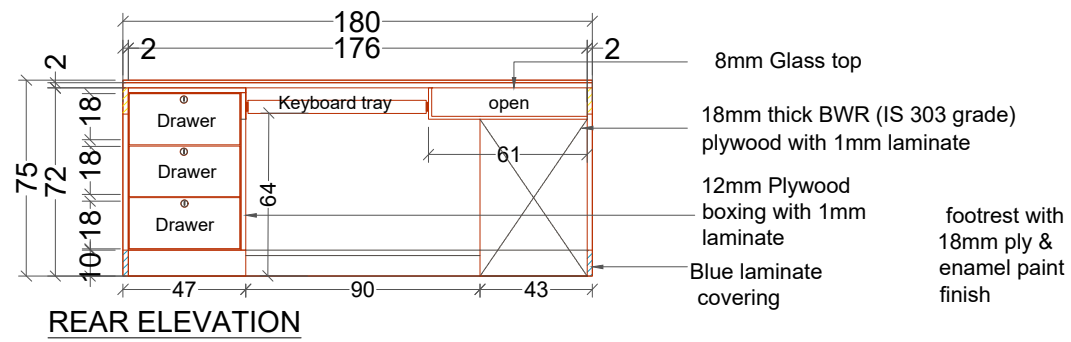
	grid light
	down light
	wall mounted fan
	tube light
	ceiling fan
	split ac

SEAL
FINS PROJECT
MANAGEMENT CONSULTANTS
THRISSUR

ISSUED ON: 20-07-2023
SHEET NO: AL05

CANARA BANK AMBALLUR BRANCH-THRISSUR

MANAGER CABIN TABLE DETAILS



PROJECT

PROPOSED INTERIORS FOR

CANARA BANK
AMBALLUR, THRISSUR,
KERALA

CLIENT

CANARA BANK

TITLE

MANAGER'S TABLE &
SIDE TABLE

DRAWN BY

SANJANA SURESH

UNITS

CMS

SCALE

NTS

REVISION

SEAL

FINS PROJECT MANAGEMENT
CONSULTANTS
THRISSUR

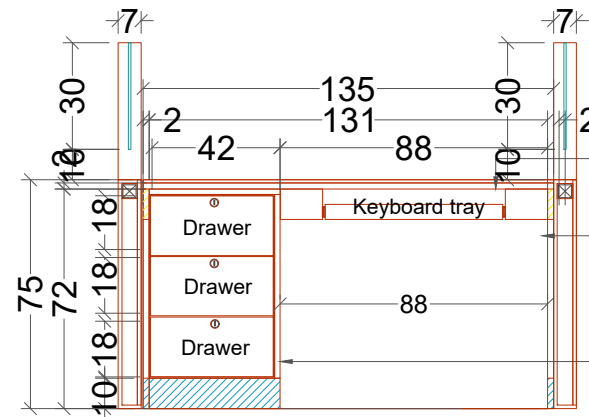


ISSUED ON:
20-07-2023

SHEET NO:
AL07

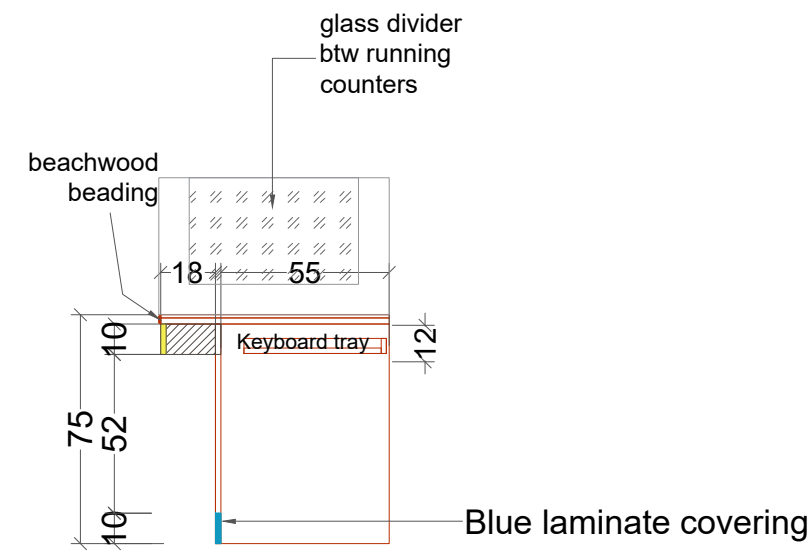
CANARA BANK AMBALLUR - CABINETRY DETAILS

OFFICER'S TABLE DETAILS

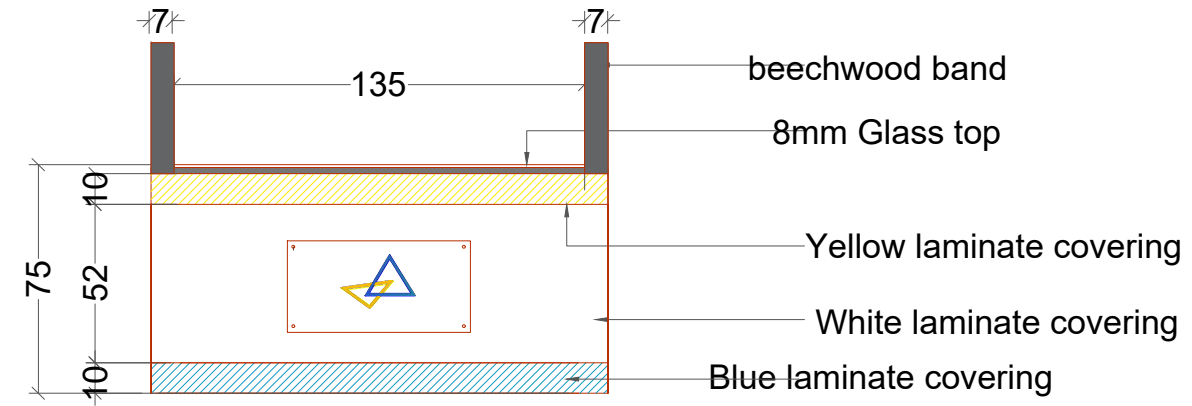


REAR ELEVATION

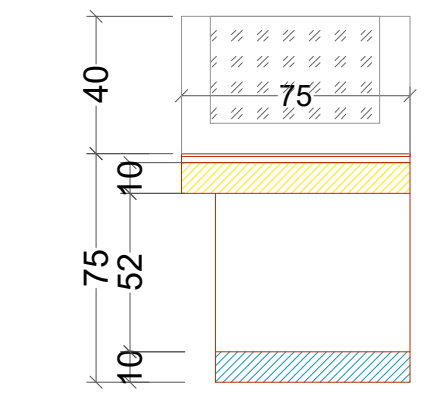
Blue laminate + 8mm Glass top
 18mm thick BWR (IS 303 grade) plywood with 1mm laminate
 12mm Plywood boxing with enamel paint finish inside



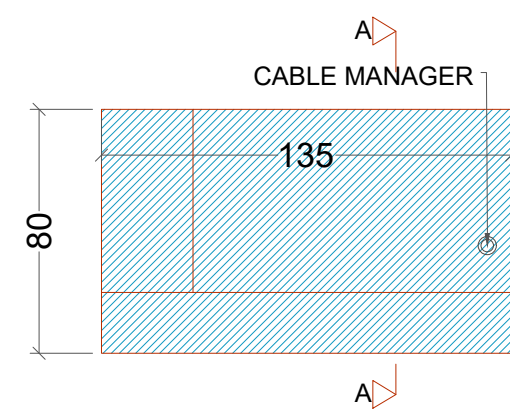
SECTION-AA



ELEVATION



SIDE ELEVATION



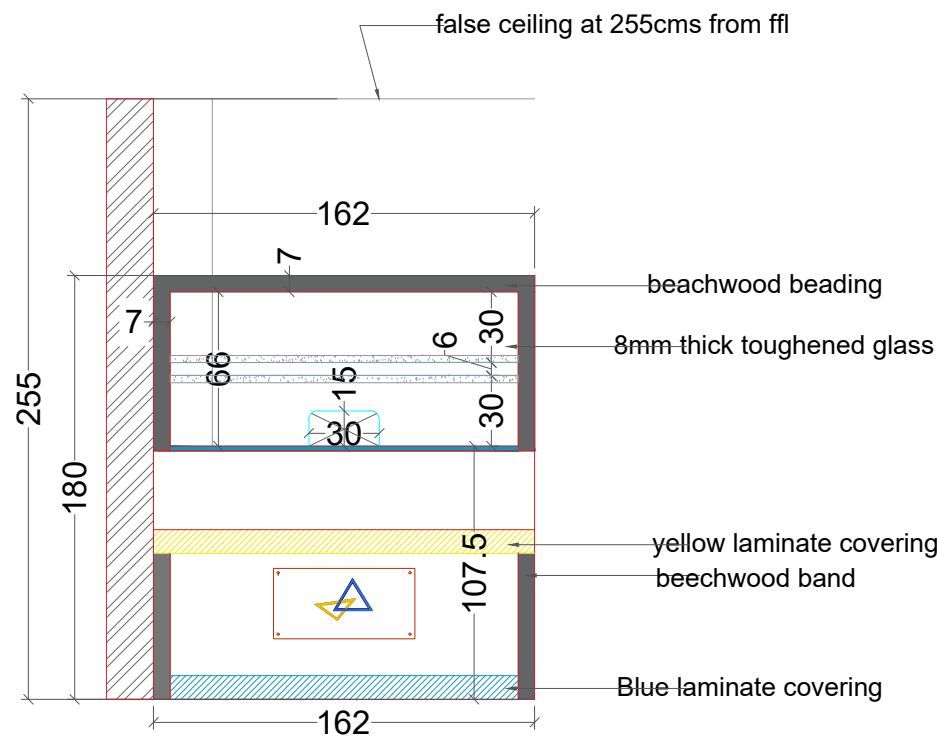
PLAN

note : goldappraiser counter to have glass insert at the table front

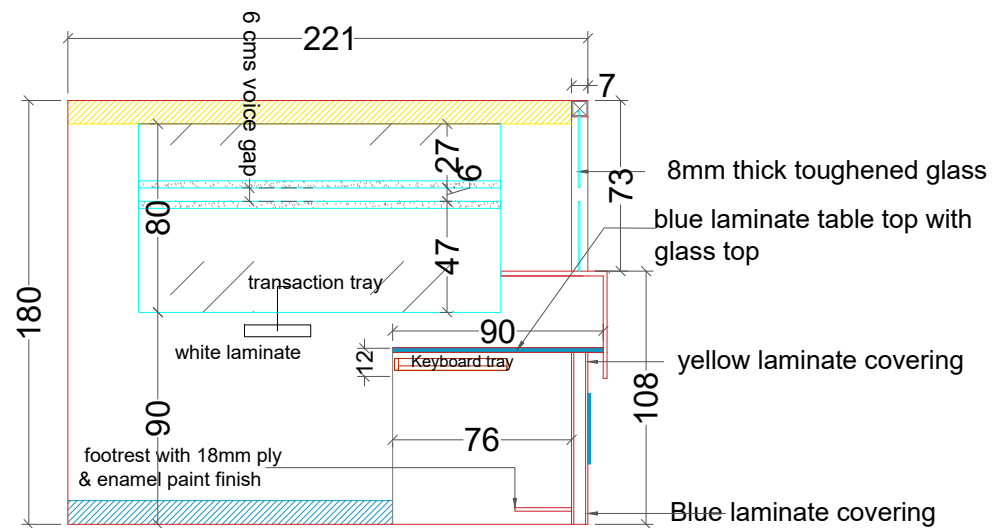
PROJECT	
PROPOSED INTERIORS FOR	
CANARA BANK ALLEPY, KERALA	
CLIENT	
CANARA BANK	
TITLE	
OFFICER TABLE	
DRAWN BY	
SANJANA SURESH	
UNITS	
CMS	
SCALE	
NTS	
REVISION	
SEAL	
FINS PROJECT MANAGEMENT CONSULTANTS THRISSUR	

	ISSUED ON:	SHEET NO:
	20-07-2023	AL06

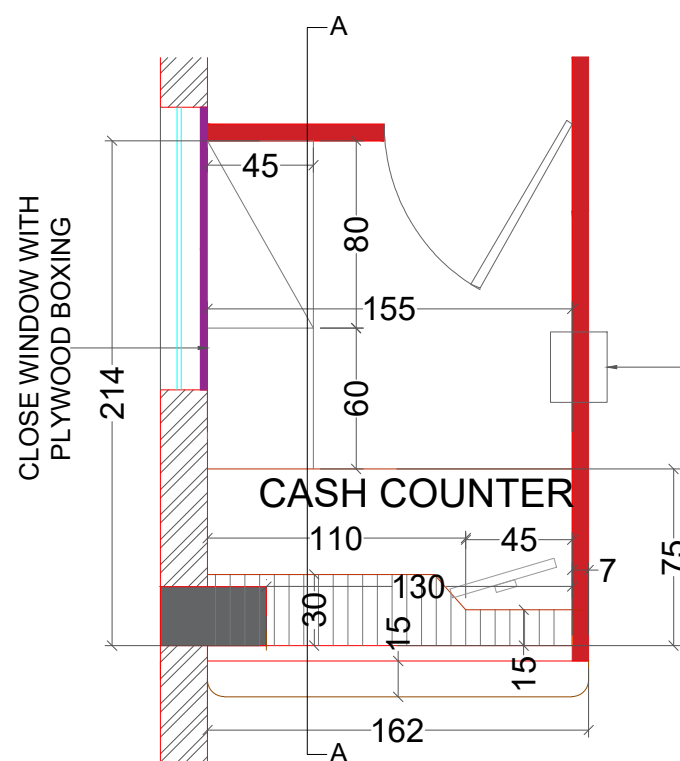
CANARA BANK AMBALLUR -CABINETRY DETAILS



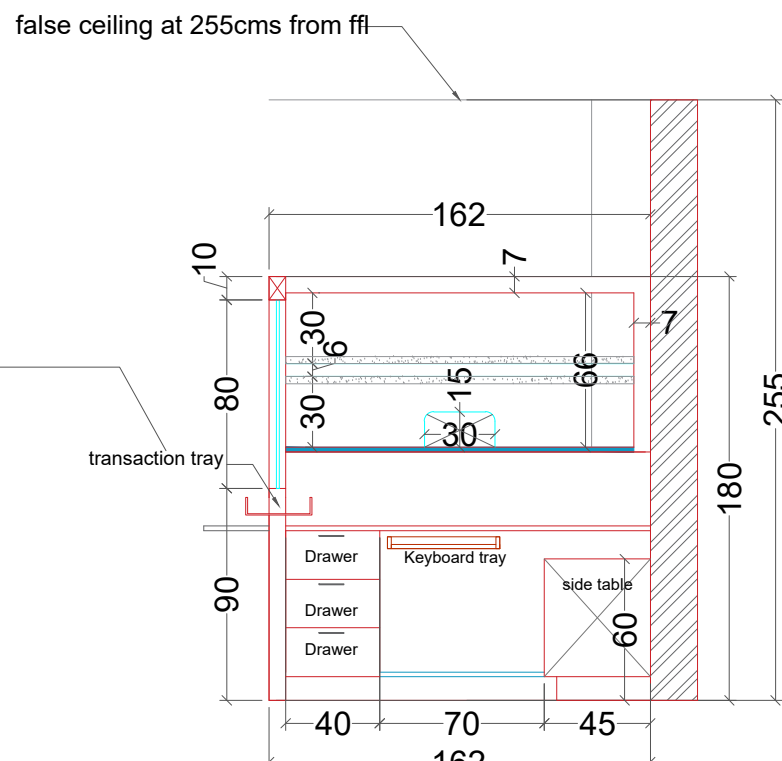
ELEVATION



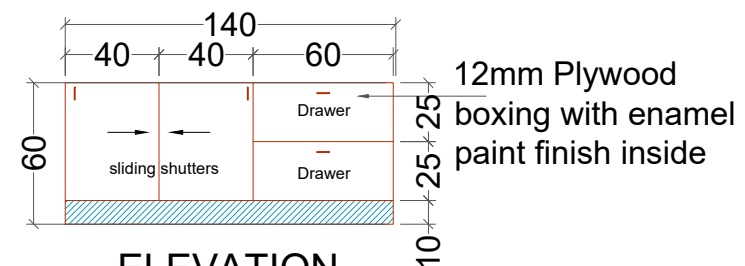
SECTION A-A'



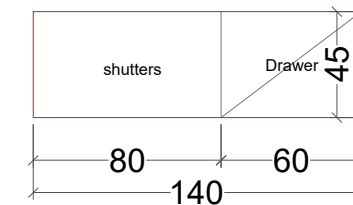
CASH COUNTER PLAN



INSIDE ELEVATION



ELEVATION



SIDE STORAGE PLAN

PROJECT

PROPOSED INTERIORS FOR

CANARA BANK

CLIENT

CANARA BANK

TITLE

CASH COUNTER

DRAWN BY

SANJANA SURESH

UNITS

CMS

SCALE

NTS

REVISION

SEAL

FINS PROJECT MANAGEMENT
CONSULTANTS
THRISSUR

ISSUED ON:

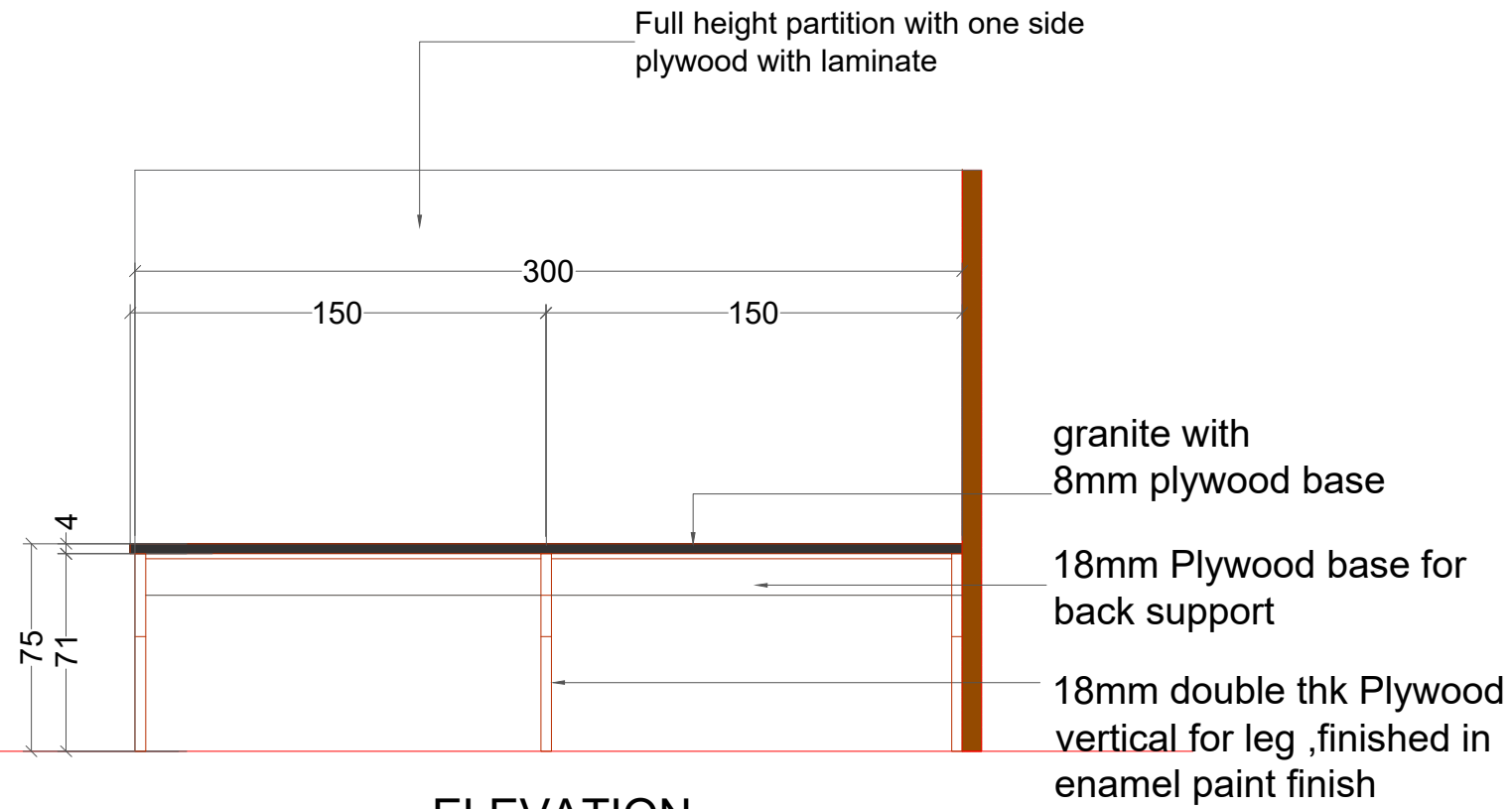
20-07-2023

SHEET NO:

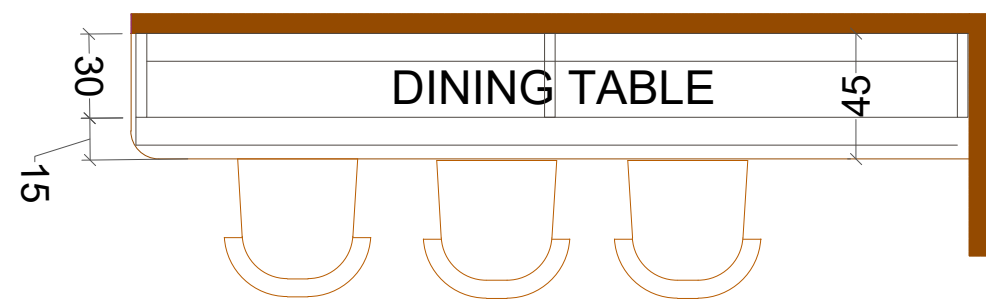
AL08

CANARA BANK AMBALLUR -CABINETY DETAILS

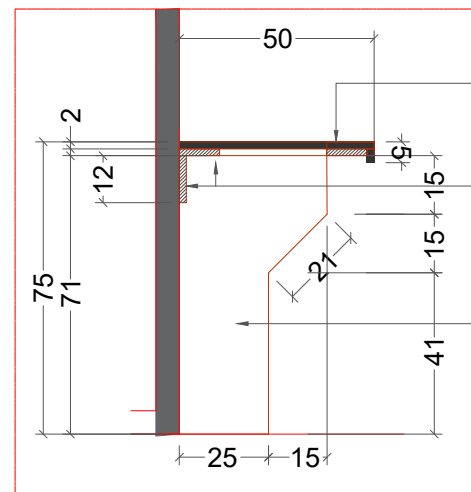
PANTRY TABLE DETAILS



ELEVATION



PLAN



SECTIONAL DETAIL

granite top with double nosing over 8mm plywood base

18mm Plywood base for back support

18mm double thk Plywood vertical for leg ,finished in enamel paint finish

PROJECT

PROPOSED INTERIORS FOR

CANARA BANK
AMBALLUR, THRISSUR,
KERALA

CLIENT

CANARA BANK

TITLE

PANTRY COUNTER
DETAILS

DRAWN BY

SANJANA SURESH

UNITS

CMS

SCALE

NTS

REVISION

SEAL

FINS PROJECT MANAGEMENT
CONSULTANTS
THRISSUR

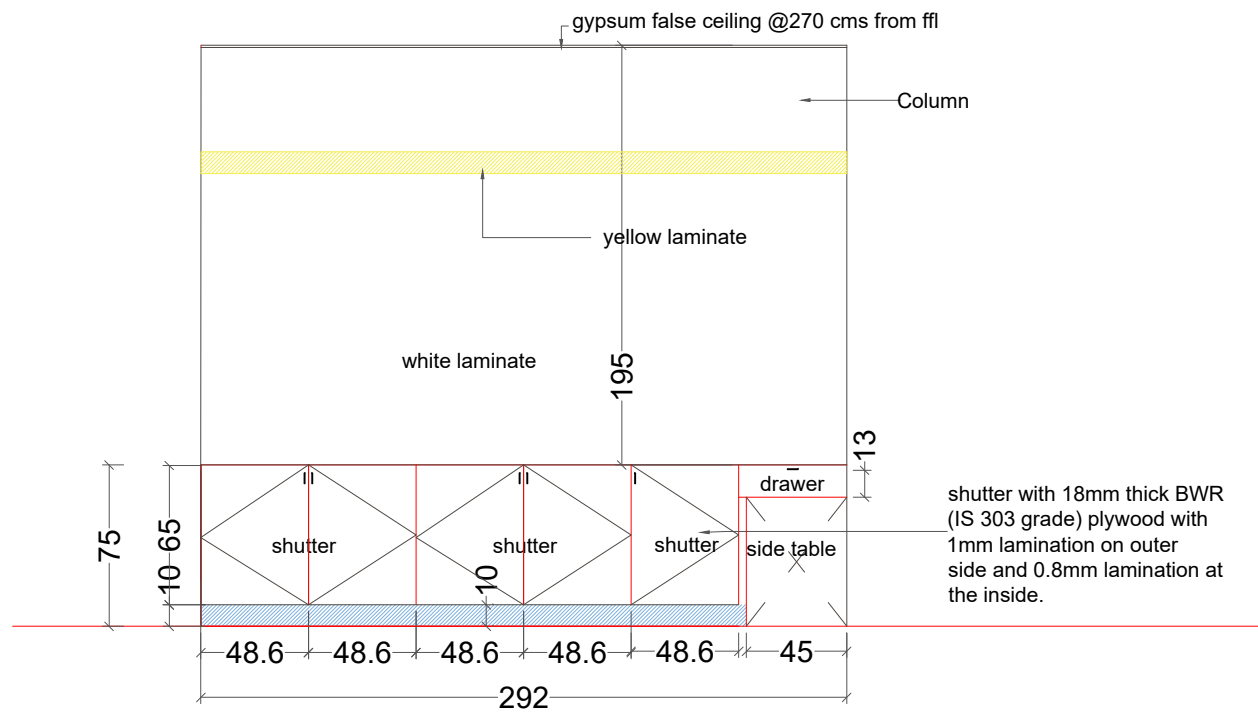


ISSUED ON:
20-07-2023

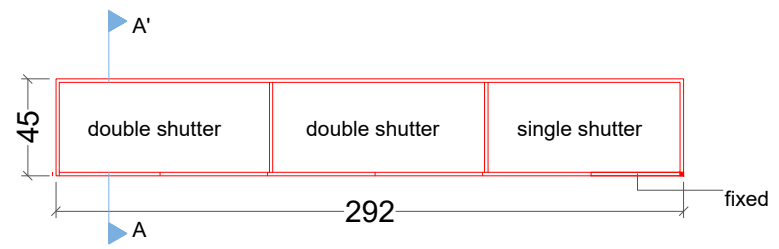
SHEET NO:
AL07

CANARA BANK AMBALLUR -CABINETRY DETAILS

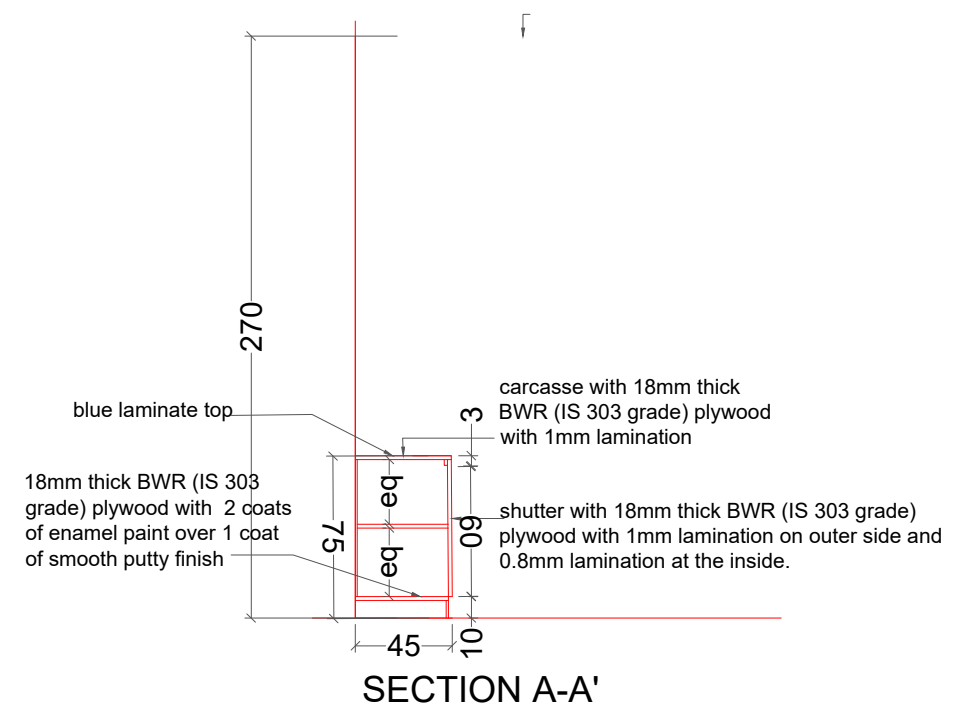
LOW HEIGHT STORAGE



ELEVATION



PLAN- LOW HEIGHT STORAGE



PROJECT

PROPOSED INTERIORS FOR

CANARA BANK
AMBALLUR, THRISSUR,
KERALA

CLIENT

CANARA BANK

TITLE

CABINetry DETAILS

DRAWN BY

SANJANA SURESH

UNITS

CMS

SCALE

NTS

REVISION

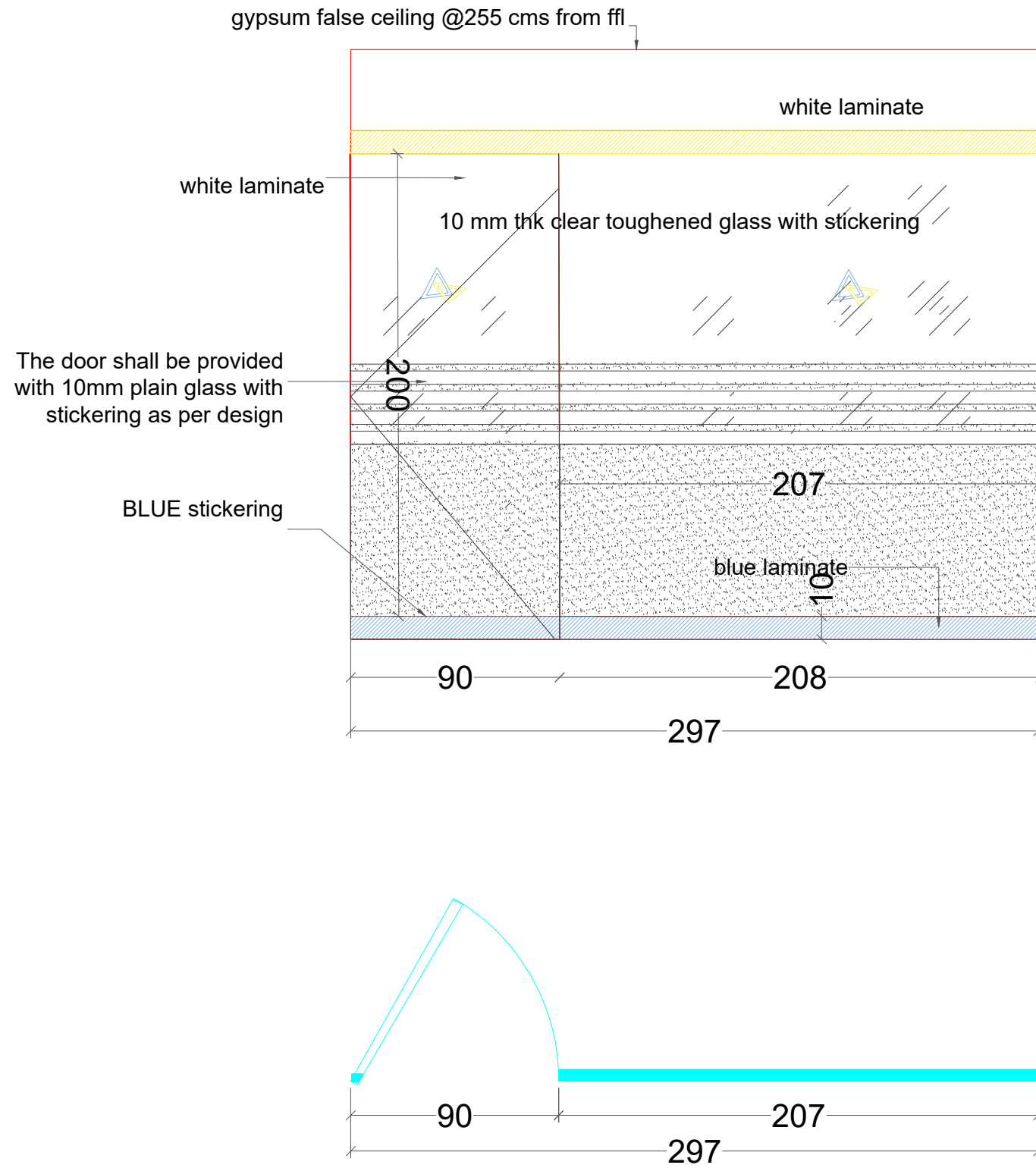
SEAL

FINS PROJECT MANAGEMENT
CONSULTANTS
THRISSUR

ISSUED ON: 20-07-2023
SHEET NO: AL09

CANARA BANK AMBALLUR -CABINetry DETAILS

MANAGER CABIN GLASS PARTITION DETAILS



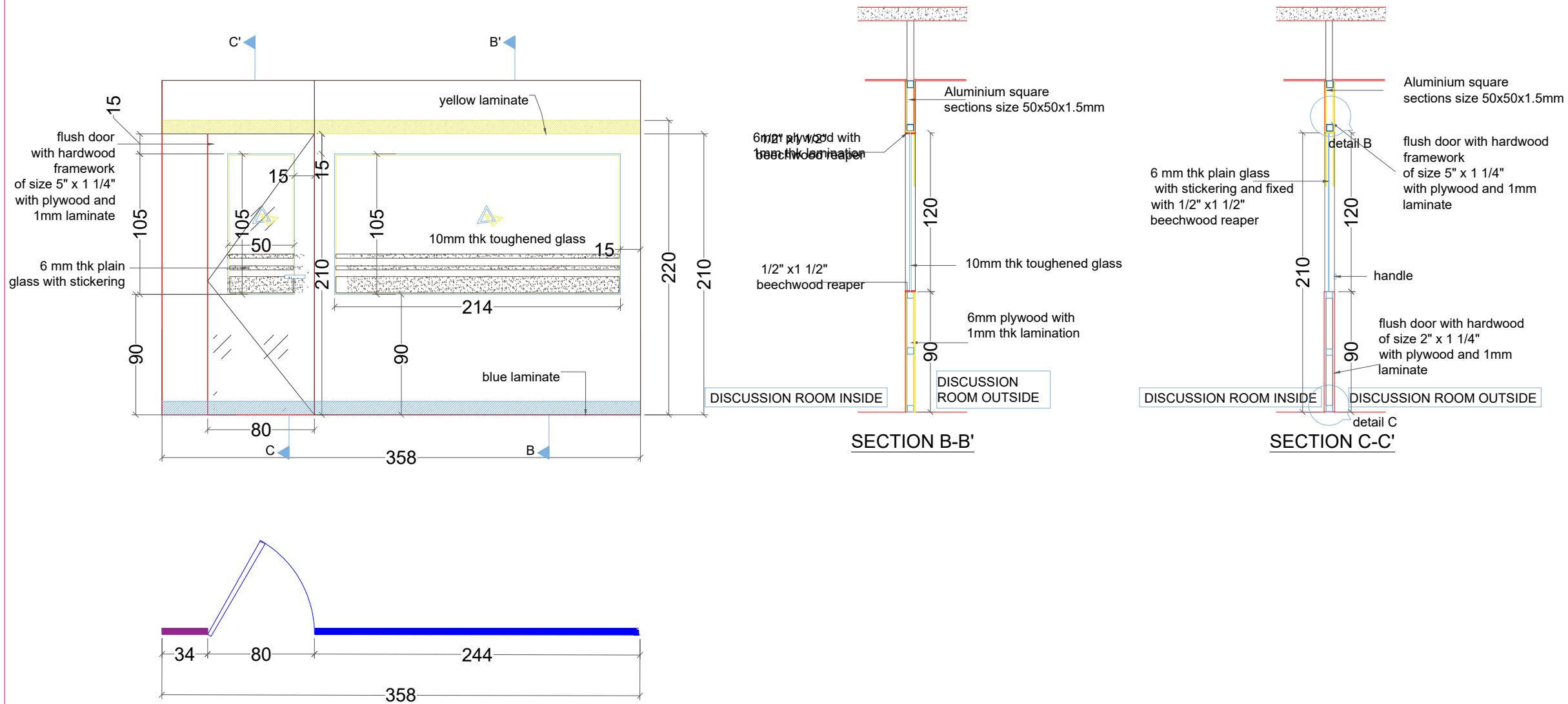
PROJECT	
PROPOSED INTERIORS FOR	
CANARA BANK	
CLIENT	
CANARA BANK	
TITLE	
PARTITION DETAILS	
DRAWN BY	
SANJANA SURESH	
UNITS	CMS
SCALE	NTS
REVISION	
SEAL	

FINS PROJECT MANAGEMENT
CONSULTANTS
THRISSUR

	ISSUED ON:	SHEET NO:
	20-07-2023	AL11

CANARA BANK AMBALLUR -PARTITION DETAILS

MANAGER CABIN SEMI GLASS PARTITION DETAILS



PROJECT

PROPOSED INTERIORS FOR

CANARA BANK

CLIENT

CANARA BANK

TITLE

PARTITION DETAILS

DRAWN BY

SANJANA SURESH

UNITS

CMS

SCALE

NTS

REVISION

SEAL

FINS PROJECT MANAGEMENT
CONSULTANTS
THRISSUR

ISSUED ON: 20-07-2023
SHEET NO: AL10

CANARA BANK AMBALLUR -PARTITION DETAILS