

FIXTURE	DESCRIPTION	HEIGHT FROM FFLVL TO CENTER
	1x18W WALL BRACKET LIGHT	+2400
	1x6W LED CEILING MOUNTED LIGHT	CEILING
	1X8W LED CEILING MOUNTED FIXTURE	CEILING
	EXHAUST FAN	+2200
	1X60W CEILING FAN 1200MM SWEEP	CEILING
	AC INDOOR UNIT	+2400
	AC OUTDOOR UNIT	--
	LED PROFILE LIGHT	--
	1 WAY SWITCH	+1200 to Bottom
	2 WAY SWITCH	+1200 to Bottom
	MASTER CONTROL SWITCH	+1200 to Bottom
	20A DP SWITCH FOR AIR CONDITIONER	+600
	FAN REGULATOR	+1200 to Bottom
	6A SWITCHED SOCKET	+1200 to Bottom
	6A SOCKET	--

FIXTURE	DESCRIPTION	HEIGHT FROM FFLVL TO CENTER
	32A DP SOCKET FOR AIR CONDITIONER	+2400
	16A SWITCHED SOCKET FOR REFRIGERATOR	+1200 to Bottom
	16A SWITCHED SOCKET	+1200 to Bottom
	TV POINT	+1200 to Bottom
	DATA SOCKET	--
	INTERCOM SOCKET	--
	TELEPHONE POINT	+600
	DISTRIBUTION BOARD	+1900 TO TOP
	20MM DIA ISI MEDIUM DUTY PVC CONDUIT FOR UPS LIGHTING	
	20MM DIA ISI MEDIUM DUTY PVC CONDUIT FOR LIGHTING	
NOTES:-	ALL BED SWITCH & SOCKET BOARDS ARE LOCATED AT A STANDARD HEIGHT OF 60 CM FROM FFLVL	
	ALL SWITCH BOARDS SHALL BE LOCATED 15CM FROM NEAREST WALL OR DOOR WHEREVER IT IS APPLICABLE	

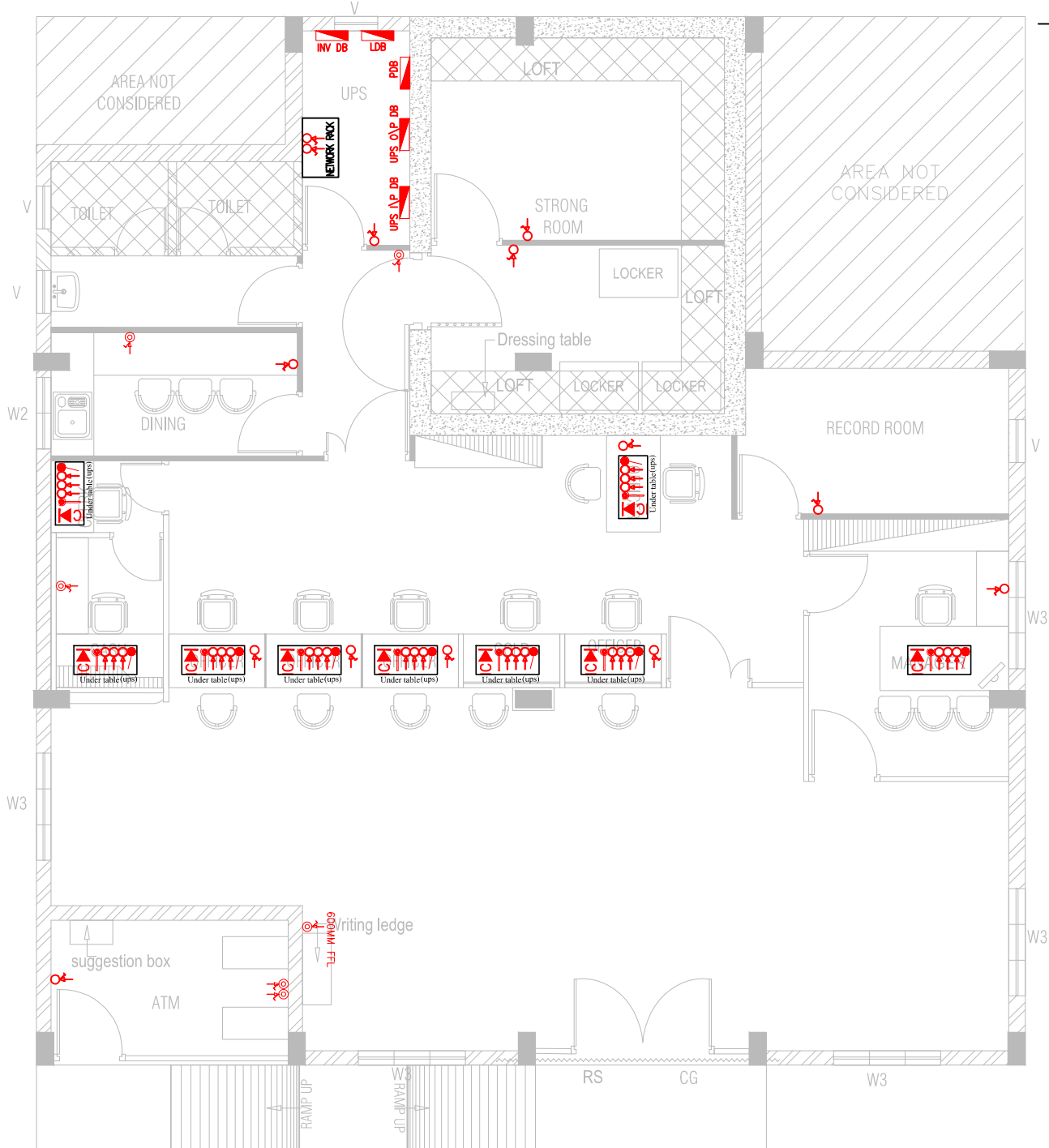
ENARC CONSULTANTS
ARCHITECTS AND ENGINEERS
 M. G. Road, Thrissur - 1.
 Tel. : +91 (487) 2441901
 E-mail : office@enarc.net.in

CANARA BANK PATTIKKAD BRANCH
ELECTRICAL LIGHTING LAYOUT

Drawn By **AMAL JAMES**
 Architect
 Ar.PRAVEEN.P
 B. Arch.[Reg], A.I.I.A, A.I.I.I.D

Chief Architect
 Ar. K. RAMAKRISHNAN
 B.Sc.(Engg), F.I.E, C. Eng (I),
 F.I.V, F.I.I.A. (Regd), A.I.I.I.D

Date : 08-02-2024
 Revision Date: 22-05-2024
 Sheet No : 01
 Scale : N T S
 All Dimensions are in CMs.



FIXTURE	DESCRIPTION	HEIGHT FROM FFLVL TO CENTER
	1x18W WALL BRACKET LIGHT	+2400
	1x6W LED CEILING MOUNTED LIGHT	CEILING
	1X8W LED CEILING MOUNTED FIXTURE	CEILING
	EXHAUST FAN	+2200
	1X60W CEILING FAN 1200MM SWEEP	CEILING
	AC INDOOR UNIT	+2400
	AC OUTDOOR UNIT	--
	LED PROFILE LIGHT	--
	1 WAY SWITCH	+1200 to Bottom
	2 WAY SWITCH	+1200 to Bottom
	MASTER CONTROL SWITCH	+1200 to Bottom
	20A DP SWITCH FOR AIR CONDITIONER	+600
	FAN REGULATOR	+1200 to Bottom
	6A SWITCHED SOCKET	+1200 to Bottom
	6A SOCKET	--

FIXTURE	DESCRIPTION	HEIGHT FROM FFLVL TO CENTER
	32A DP SOCKET FOR AIR CONDITIONER	+2400
	16A SWITCHED SOCKET FOR REFRIGERATOR	+1200 to Bottom
	16A SWITCHED SOCKET	+1200 to Bottom
	TV POINT	+1200 to Bottom
	DATA SOCKET	--
	INTERCOM SOCKET	--
	TELEPHONE POINT	+600
	DISTRIBUTION BOARD	+1900 TO TOP
	20MM DIA ISI MEDIUM DUTY PVC CONDUIT FOR UPS LIGHTING	
	20MM DIA ISI MEDIUM DUTY PVC CONDUIT FOR LIGHTING	
NOTES:-	ALL BED SWITCH & SOCKET BOARDS ARE LOCATED AT A STANDARD HEIGHT OF 60 CM FROM FFLVL	
	ALL SWITCH BOARDS SHALL BE LOCATED 15CM FROM NEAREST WALL OR DOOR WHEREVER IT IS APPLICABLE	

ENARC CONSULTANTS
ARCHITECTS AND ENGINEERS
 M. G. Road, Thrissur - 1.
 Tel. : +91 (487) 2441901
 E-mail : office@enarc.net.in

PROPOSED INTERIOR FURNISHING
FOR BANKS CANARA BANK
PATTIKKAD BRANCH

ELECTRICAL POWER LAYOUT

Drawn By **AMAL JAMES**
 Architect

Ar.PRAVEEN.P
 B. Arch.[Reg], A.I.I.A, A.I.I.I.D

Chief Architect

Ar. K. RAMAKRISHNAN
 B.Sc.(Engg), F.I.E, C. Eng (I),
 F.I.V, F.I.I.A. (Regd), A.I.I.I.D

Date : 08-02-2024
 Revision Date: 22-05-2024

Sheet No : 01
 Scale : NTS
 All Dimensions are in CMs.