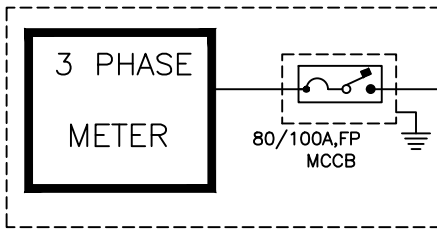


SCHEMATIC SINGLE LINE DIAGRAM

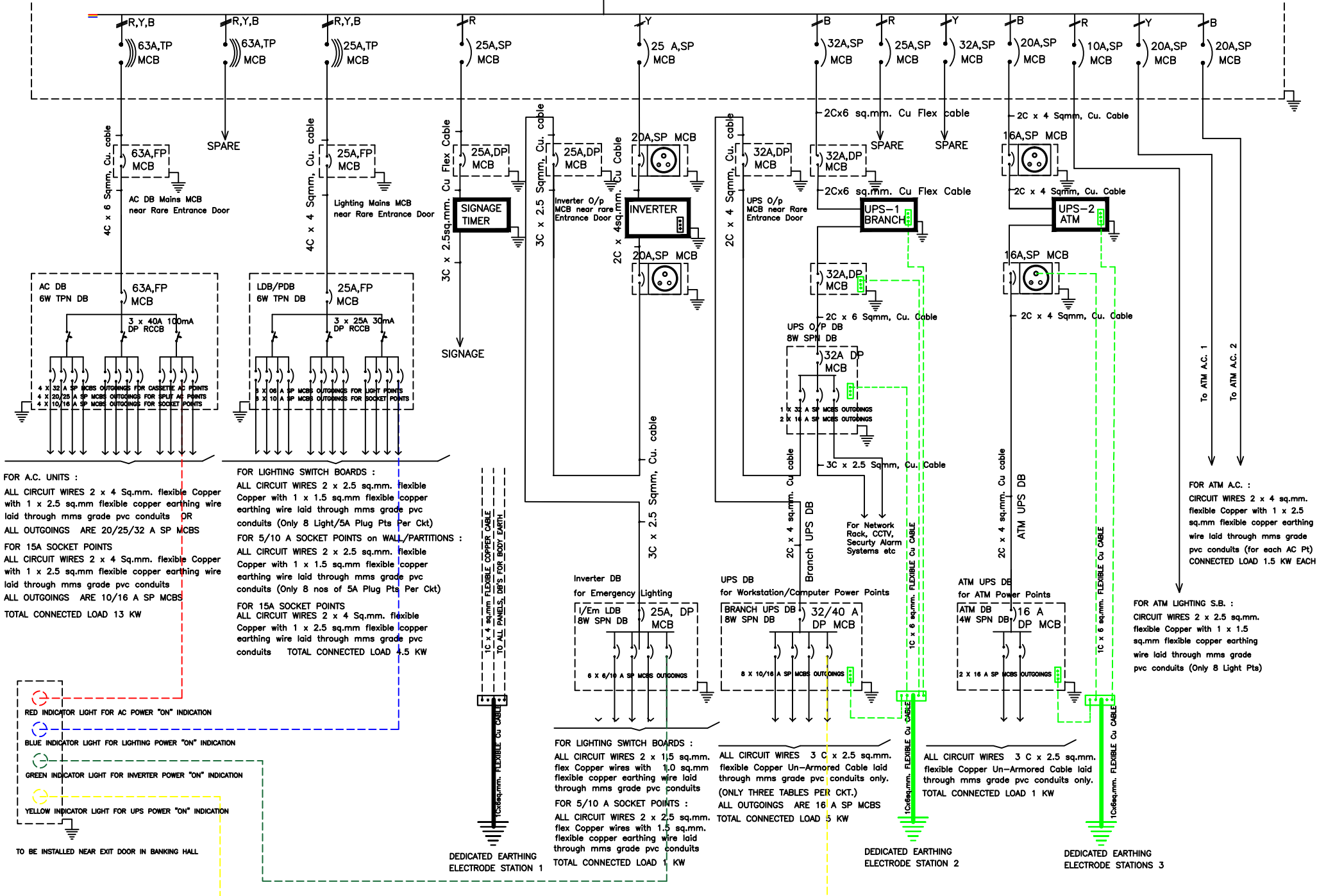
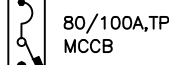
METER BOX/ROOM/CABIN



3 1/2C x 35 sq.mm.
Aluminium ARM CABLE
TOTAL CONNECTED LOAD 28 KW

3 1/2C x 35 sq.mm.
Aluminium ARM CABLE

MAIN POWER D.B.
6 WAY VTPN MCCB DB



FOR A.C. UNITS :
ALL CIRCUIT WIRES 2 x 4 Sq.mm. flexible Copper with 1 x 2.5 sq.mm flexible copper earthing wire laid through mms grade pvc conduits OR ALL OUTGOINGS ARE 20/25/32 A SP MCBS
FOR 15A SOCKET POINTS
ALL CIRCUIT WIRES 2 x 4 Sq.mm. flexible Copper with 1 x 2.5 sq.mm flexible copper earthing wire laid through mms grade pvc conduits
ALL OUTGOINGS ARE 10/16 A SP MCBS
TOTAL CONNECTED LOAD 13 KW

FOR LIGHTING SWITCH BOARDS :
ALL CIRCUIT WIRES 2 x 2.5 sq.mm. flexible Copper with 1 x 1.5 sq.mm flexible copper earthing wire laid through mms grade pvc conduits (Only 8 Light/5A Plug Pts Per Ckt)
FOR 5/10 A SOCKET POINTS ON WALL/PARTITIONS :
ALL CIRCUIT WIRES 2 x 2.5 sq.mm. flexible Copper with 1 x 1.5 sq.mm flexible copper earthing wire laid through mms grade pvc conduits (Only 8 nos of 5A Plug Pts Per Ckt)
FOR 15A SOCKET POINTS
ALL CIRCUIT WIRES 2 x 4 Sq.mm. flexible Copper with 1 x 2.5 sq.mm flexible copper earthing wire laid through mms grade pvc conduits TOTAL CONNECTED LOAD 4.5 KW

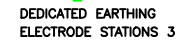
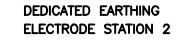
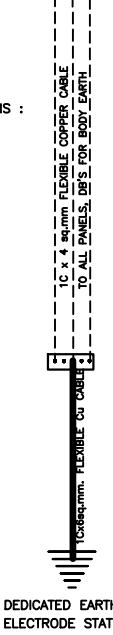
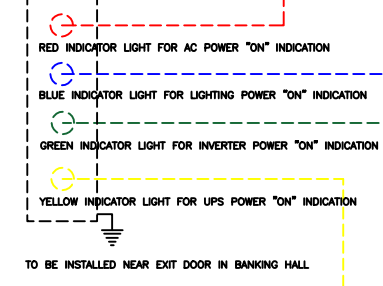
FOR LIGHTING SWITCH BOARDS :
ALL CIRCUIT WIRES 2 x 1.5 sq.mm. flex Copper wires with 1.0 sq.mm flexible copper earthing wire laid through mms grade pvc conduits
FOR 5/10 A SOCKET POINTS :
ALL CIRCUIT WIRES 2 x 2.5 sq.mm. flex Copper wires with 1.5 sq.mm. flexible copper earthing wire laid through mms grade pvc conduits TOTAL CONNECTED LOAD 1 KW

ALL CIRCUIT WIRES 3 C x 2.5 sq.mm. flexible Copper Un-Armored Cable laid through mms grade pvc conduits only. (ONLY THREE TABLES PER CKT.)
ALL OUTGOINGS ARE 16 A SP MCBS
TOTAL CONNECTED LOAD 5 KW

ALL CIRCUIT WIRES 3 C x 2.5 sq.mm. flexible Copper Un-Armored Cable laid through mms grade pvc conduits only.
TOTAL CONNECTED LOAD 1 KW

FOR ATM A.C. :
CIRCUIT WIRES 2 x 4 sq.mm. flexible Copper with 1 x 2.5 sq.mm flexible copper earthing wire laid through mms grade pvc conduits (for each AC Pt) CONNECTED LOAD 1.5 KW EACH

FOR ATM LIGHTING S.B. :
CIRCUIT WIRES 2 x 2.5 sq.mm. flexible Copper with 1 x 1.5 sq.mm flexible copper earthing wire laid through mms grade pvc conduits (Only 8 Light Pts)



Architect :
NARENDRA SARDESHPANDE & ASSOCIATES
43, Shreekul, Flat no 2, Ground Floor,
United Western Housing Society,
Near Tathwade Garden, Karvenagar, Pune - 411004
Contact : 9822072016, (020) 25454297

Electrical Consultant :
Jayesh Rao
A-2 / 201-202, Om Shiv CHS Ltd,
Ghodbandar Road, near R-Mall,
Thane (w), Maharashtra - 400607.
Mb.: 9821232350, E-mail : rao_jayesh@rediffmail.com

Client : CANARA BANK

Project : CANARA BANK, KARVE ROAD BRANCH , PUNE

Scale : _____ Drawn : _____
Date : 15 - 05 - 2024 Chkd : _____
Title : **ELECTRICAL S. L. D. LAYOUT**
Drg No.: _____ Rev. : 03